

## Data Portability

Blink Data Portability offers authorized third parties the capability to programmatically import Blink customers' data to an app or website after the customers give authorization through Login With Blink(LWB).

Blink Data Portability allows 3P apps or websites to access and retrieve a customer's Blink data, based on the customer's explicit authorization through Blink Data Portability scopes. The Scopes are defined the type of data the customers are authorizing third parties to access. See Blink Scopes for details.

This document explains how Blink Data Portability works and guides you through these three-high level sections: (1) configure the Blink Data Portability service, (2) authorize your app and/or website, and (3) connect with Blink Data Portability API. You need to complete the steps in each section before your app or website can import customers' data.

Blink Data Portability enables customers to programmatically port to authorized third party apps or websites portions of their Blink data.

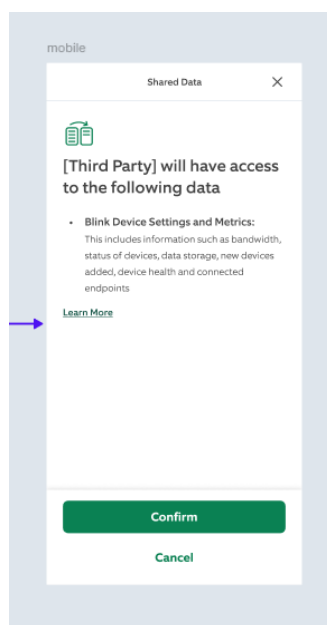
Blink Data Portability enables customers to programmatically port to authorized third party apps or websites portions of their Blink data from these countries: Belgium, France, Germany, Ireland, Italy, Netherlands and Spain.

This document assumes that you have an app or website ("Application") ready to add the Login With Blink button. This doesn't cover guidelines on how to build an Application.

**Want to know how Blink Data Portability works?** Proceed to Blink Data Portability workflow.

## Blink Data Portability workflow

From your Application, Blink customers will use the **Login with Blink** button. Blink displays the *Sign in* page where customers sign in using their Blink credentials. The *Sign in* operation is paired with Transaction Intent Verification to verify Blink customer's credentials. If customers sign in, Blink displays the Authorization page with Blink Data Scope.




Sample Blink Authorization page

On the Authorization page, customers select **Confirm** or **Cancel**. If the customer selects **Cancel**, the workflow ends. Your Application won't have the capability to import that customer's data. If the customer selects **Confirm**, Blink displays the *User Sharing Preferences* page.

Blink Data Portability scope can be requested by your Application, which means that a customer can review and consent the information they will be sharing.

On the *User Sharing Preferences* page, Blink provides option for the customers to [set their preferences](#), acknowledge the authorization, and select the **Cancel** or **Authorize** button. If the customer selects the **Authorize** button, it activates the Blink Data Portability in your Application, providing authorization to import that customer's data. If the customer selects **Cancel**, your Application won't be authorized to import that customer's data.

Once the customer selects **Authorize**, you will use the Login with Blink to get the customer's authorization (OAuth2) code. You will use the OAuth code to get access and refresh tokens, which you will need to call the Blink Data Portability API and import the customer's data in your Application.

 Importing user data in your Application is asynchronous. Please ensure your Application has an HTTPS endpoint.

**Want to learn how Blink provides option for the customers to select what data to consent to?**

Proceed to [User Transfer Preferences](#).


## USER TRANSFER PREFERENCES

Data that are ported to your Application depends on the preferences set by the customer in the *User Transfer Preferences* page.

<

Shared Data

×



Select sharing preferences

How much data do you want to share?

Last 5 days

How long do you want to grant access?

One time only

Continue

Cancel

*User Transfer Preferences page*

### How much data to transfer?

Customers select how much data your Application can import by selecting a past date. The drop-down list offers these options: Last 5 days, Last 30 days, Last 60 days, Last one year and Since date xx/xx/xxxx.

### For how long do you authorize the transfer?

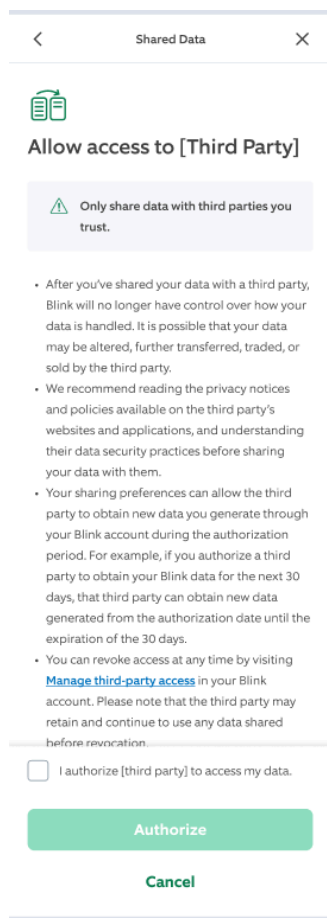
Customers select how long your Application can import data by selecting a future date. The drop-down list offers these options: One time transfer, For the next 30 days, For the next 90 days, For the next 180 days, and For the next 1 year. Once the selected period expires, your Application will be unable to import customers data unless the customer provides a new authorization.

🔒 Authorization ends when customers revoke access or tokens expire. Customers receive an email about authorization changes and expirations.

## Developer data handling practices


### Developer data handling practices

Customers are informed about your privacy practices about handling their EU data. This information was provided by you when you first contacted Blink to onboard with Blink Data Portability API.




The screenshot shows a mobile app interface titled "Shared Data" with a back arrow and a close "X" button. Below the title is a green icon of a document with a checkmark. The main heading is "Allow access to [Third Party]". A warning box with a triangle icon states: "Only share data with third parties you trust." Below this is a list of four bullet points explaining data sharing implications. At the bottom, there is a checkbox labeled "I authorize [third party] to access my data." and two buttons: a green "Authorize" button and a green "Cancel" button.

< Shared Data X



Allow access to [Third Party]

 Only share data with third parties you trust.

- After you've shared your data with a third party, Blink will no longer have control over how your data is handled. It is possible that your data may be altered, further transferred, traded, or sold by the third party.
- We recommend reading the privacy notices and policies available on the third party's websites and applications, and understanding their data security practices before sharing your data with them.
- Your sharing preferences can allow the third party to obtain new data you generate through your Blink account during the authorization period. For example, if you authorize a third party to obtain your Blink data for the next 30 days, that third party can obtain new data generated from the authorization date until the expiration of the 30 days.
- You can revoke access at any time by visiting [Manage third-party access](#) in your Blink account. Please note that the third party may retain and continue to use any data shared before revocation.

☐ I authorize [third party] to access my data.

Authorize

Cancel

### I authorize the third party to receive my EU data

Customers mark the checkbox to authorize your Application to import their Blink data. After the customers select the **Authorize** button, your Application will have the capability to import customers' data. If the Blink customers exit from this page or select **Cancel**, your Application won't have the capability to import customers' data.

🔑 To import customers' data, you will need to complete the steps in the Configure Blink Data Portability service, Authorize your app to connect with Blink Data Portability API, and Connect your app with Blink Data Portability API.

## Steps to Onboard with Blink

Step 1: Send an email to [blink-data-portability-ipv@amazon.com](mailto:blink-data-portability-ipv@amazon.com) with the below details to begin the onboarding process:

Email address  
Company Name,  
Company Address,  
Name of the Business Owner or Legal Representative  
Please attach the Business license to the email

Step 2: Respond to emails/queries/meeting invites from the Blink/Amazon teams to help kickstart the onboarding process.

Step 3: A questionnaire will be shared after validating the above details. Fill the details and share it for further validation.

Step 4: Respond to emails/queries during the Third Party Security Assessment until its successful completion.

Step 6: Send an email to [blink-data-portability@amazon.com](mailto:blink-data-portability@amazon.com) to request credentials, and share the TPSA(Third party Security Assessment) ID for reference.

Step 5: Enable the customer experience (CX) in the 3P website and app.

Email address agreed -

- [blink-data-portability-intake@amazon.com](mailto:blink-data-portability-intake@amazon.com) – This email will be the initial contact point where 3Ps can submit their requests to begin the assessment process. (IPV Queue)
- [blink-data-portability-access-and-support@amazon.com](mailto:blink-data-portability-access-and-support@amazon.com)- After the assessment is complete, 3Ps can use this email address to request access credentials.

## Authorize your application to connect to Blink Data Portability for EU DA

### AUTHORIZATION FLOW

#### Initiating the authorization Flow

After onboarding, you will receive a `client_id` and `client_secret`, which are used for subsequent OAuth 2.0 API interactions.

To initiate the authorization flow, direct users to the appropriate authorization endpoint:

- For Blink: GET <https://api.oauth.blink.com/v2/authorize>

This endpoint must be called with an HTTP GET request, with all required parameters provided as **form-encoded query parameters**. These include:

- `response_type`: Designates the expected response to the callback is an authorization code; use "code"
- `client_id`: Provided during onboarding
- `redirect_uri`: The URI to redirect the user after authorization; must match a registered URI from onboarding
- `scope`: The access scope; use "data-portability"
- `code_challenge`: The PKCE code challenge (derived from your code verifier)
- `code_challenge_method`: encryption method used for the code challenge. IE: S256 / plain
- `state`: An opaque value the client provides to help protect against CSRF. We return it unchanged; it's up to the client to

generate and validate it.

Example Request:

```
GET https://oauth.blink.com/v2/authorize?
    redirect_uri=<your_redirect_uri>&
    client_id=<your_client_id>&
    response_type=code&
    scope=data-portability&
    code_challenge=<your_code_challenge>&
    code_challenge_method=S256&
    state=<random_state>
```

When this request is made, the user will be guided through the Blink login experience. Once complete, the user will be redirected to the specified `redirect_uri` with two key query parameters appended:

- `code`: The **authorization code**, used to request tokens
- `state`: The same value you originally sent; verify this to ensure request integrity

In the case of any errors that occurs, or if the user cancels the authorization flow during the Blink login experience, the user will be redirected back to the provided `redirect_uri` with the following parameters:

```
https://<your_redirect_url>?error=<error_message>&error_description=<error_description>
```

An example of when a user cancels the experience will look like the following:

```
?error=access_denied&error_description=The+resource+owner+or+authorization+server+deni
```

## Exchanging Authorization Code for Tokens

To exchange the authorization code for an access token and refresh token, make the following POST request to the token endpoint:

```
POST https://api.oauth.blink.com
Content-Type: application/x-www-form-urlencoded
```

### Required form parameters:

- `grant_type`: "authorization\_code"
- `client_id`: Your client ID
- `client_secret`: Your client secret
- `code`: The authorization code received from the redirect
- `redirect_uri`: Must match the original redirect URI
- `code_verifier`: The original PKCE string that must correspond to the `code_challenge`, based on the specified `code_challenge_method` (e.g., plain or S256).
- `scope`: "data-portability"

Example Response

```
{
  "access_token": "<your_access_token>",
  "expires_in": int,
  "refresh_token": "<your_refresh_token>",
  "scope": "data-portability",
  "token_type": "Bearer"
}
```

## OBTAINING NEW ACCESS TOKENS WITH REFRESH TOKENS

To obtain a new access token using a refresh token, send a POST request to <https://oauth.blink.com/oauth/token> with Content-Type: application/x-www-form-urlencoded. This request uses the refresh\_token grant type and should include the following required parameters:

- grant\_type: "refresh\_token"
- refresh\_token: the refresh token you previously received
- client\_id: your client ID
- client\_secret: your client secret
- scope (optional): defaults to the originally requested scopes, (e.g., "data-portability").

If successful, the response will include a new access\_token and a new refresh\_token. Store the new refresh token if one is returned, as it will replace the old one for future use.

Example:  
POST <https://oauth.blink.com/oauth/token> HTTP/1.1  
Content-Type: application/x-www-form-urlencoded  
  
grant\_type=refresh\_token&  
refresh\_token=<your\_refresh\_token>&  
client\_id=<your\_client\_id>&  
client\_secret=<your\_client\_secret>

## Connect with the Data Portability APIs

Amazon Data Portability lets you import customer data to your Application provided the customers give authorization.

### VERSION INFORMATION

- Version: 2024-02-29

### LICENSE INFORMATION

- License: Amazon Software License
- License URL: <https://aws.amazon.com/asl/>

### CONSUMES

#### APPLICATION/JSON

### PRODUCES

#### APPLICATION/JSON

## ENDPOINTS

|   |                       |
|---|-----------------------|
| intake.eu-west-1.portability.data.blink.com | Europe (Dublin)       |
| intake.us-east-1.portability.data.blink.com | US East (N. Virginia) |
| intake.us-west-2.portability.data.blink.com | US West (Oregon)      |

 You have an option to switch anytime between regions because all responses will be synced.


## EXTERNAL DOCS

- Description : Learn more about Amazon.
- URL : <https://developer.amazon.com>

## OPERATIONS

### CREATEDATAQUERY

#### listDataQueryRecords

 Responses for all operations have a five minute, time-to-live (TTL) based on the authorization check. During the five-minute period, the API will return the same response for the same parameters.

## PATHS

### Create Data Query

#### POST /{scopeId}/data-queries

##### Operation:

createDataQuery

##### Description:

Use the `createDataQuery` operation to start requesting authorized customer data. The request will start in the Amazon Data Portability API, an async task that will start the request to gather data, and at the same time, will return the `queryId` that identifies the request from the async task.

To ensure fair usage and system stability, the Create Data Query operation has the following rate limits:

Standard base rate: 5 requests per second

Burst limits: Up to 5 concurrent requests per second

Overall limit: No more than 20 requests within a 20-minute interval

Requests exceeding these limits will be throttled with a 429 HTTP status code.

##### Parameters:

|        |   |   |        |
|--------|---|---|--------|
| Path   | <code>scopeId</code><br><i>required</i>       | <code>scopeId</code> to use when calling the Amazon Data Portability API. | string |
| Header | <code>authorization</code><br><i>required</i> | The access token to use when calling the Amazon Data Portability API.     | string |

Only one request for customer and `scopeId` can be computed at a time. If there's a request in progress and in a non-terminal state (not COMPLETED or CANCELED), the API will return a CONFLICT error.

##### Responses:

---

|   | HTTP Code | Description  | Schema                                |
|---|-----------|--|---------------------------------------|
| 1 | 201       | The query call is successful.  | <a href="#">CreateDataQueryOutput</a> |
| 2 | 400       | The service was unable to process your request. Reasons for the error are described in an error response object. | <a href="#">ErrorResponse</a>         |

For additional error status codes, descriptions and schemas, see [Error responses and schemas](#).

Amazon Data Portability API returns forbidden or invalid token errors if (1) authorization expired, (2) the customer revoked the authorization, or (3) the account is on hold.

## List Data Query Records

### GET `/[{scopeId}]/data-queries/{queryId}/records`

#### Operation:

`listDataQueryRecords`

#### Description:

Use the `listDataQueryRecords` operation to view all customer data and port it in your Application. Use this operation for queries that have been marked with `COMPLETED` status. For queries that have a different status, the API will return an error. List Data Query Records will return results for a query after the notification response has been sent. Each file and schema link will be available for five minutes from the time the response was sent, and you can perform the same list operation for the same query for at most 1 hour after the response notification has been sent. All schemas and responses from a List Data Query Record, after download, will be at 2GB max.

To ensure fair usage and system stability, the List Data Query operation has the following rate limits:

Standard base rate: 10 requests per second

Burst limits: Up to 5 concurrent requests per second

Daily quota: 100,000 requests

Requests exceeding these limits will be throttled and receive a 429 HTTP status code.

#### Parameters

|        |   |  |         |       |  |
|--------|---|--|---------|-------|--|
| Path   | <code>scopeId</code><br><i>required</i>       | scopeId to use when calling the Amazon Data Portability API.   | string  | -     | <code>data-portability</code>                      |
| Path   | <code>queryId</code><br><i>required</i>       | The queryId that was completed and to use when calling the API.  | UUID    | -     | <code>a1111111-b222-c333-d444-e55555555555</code>  |
| Query  | <code>maxResults</code><br><i>optional</i>    | The maximum number of records to be returned in the response of the API call. Value is between 1 and 250.  | integer | 250   | 200  |
| Query  | <code>nextPageToken</code><br><i>optional</i> | A page token returned in the response to your previous request. The <code>nextPageToken</code> is returned when the number of results exceed the page size. To get the next page of results, include <code>nextPageToken</code> as parameter. When no <code>nextPageToken</code> value is returned, there are no more records to return. | string  | empty | <code>StringWithNextPageTokenValue123----</code>   |
| Header | <code>authorization</code><br><i>required</i> | The access token to use when calling the Amazon Data Portability API.  | string  | -     | <code>Bearer BacdIgeEBIJBAxValidAccessToken</code> |

## Responses

|     |  |  |
|-----|--|--|
| 200 | Product successfully retrieved.  | <a href="#">ListDataQueryRecordsOutput</a> |
| 400 | The service was unable to process your request. Reasons for the error are described in an error response object. | <a href="#">ErrorResponse</a>              |



For additional error status codes, descriptions and schemas, see Error responses and schemas.

Amazon Data Portability API returns forbidden or invalid token errors if (1) authorization expired, (2) the customer revoked the authorization, or (3) the account is on hold.

## RESPONSE NOTIFICATION


### DESCRIPTION:

Once the create data query has reached its final state, Amazon Data Portability API sends a notification response, through a POST method, on your HTTPS endpoint. The API sends the response to the same region you sent the create request. The notification file size is at 1KB max. You can perform List Data Query Records operations for the same query for at most 1 hour after the response notification has been sent.

Amazon Data Portability API includes the notification version number in the response. Consider including the version number at the end of the HTTP path. For example, if your HTTPS endpoint is `https://myapp/notifications`, use `https://myapp/notifications/v1` for version 1.

Available supported versions: 1.0


Latest supported version: 1.0

 You have an option to change the HTTPS endpoints by submitting a case through a Contact Us in Developer Portal. In the category section, select **"Amazon Data Portability"**. In the topic section, select **"Allowlisting & Integration Updates"**. Provide the details related to your new HTTPS endpoints.

### Responses:

The notification has the HTTP/HTTPS notification JSON format.

|   | Entry   | Description   | Schema                                      |
|---|---------|---|---|
| 1 | Subject | The subject of the notification sent on the HTTPS endpoint.                                 | <a href="#">ResponseNotificationSubject</a> |
| 2 | Message | Details the specific notification that was sent after the customer data has been collected. | <a href="#">ResponseNotificationMessage</a> |

 The Application is automatically subscribed to the notification version number available during Application submission. After Application submission, and if a new notification version becomes available, you have an option to request for the new version. To opt-in to a new version, go to Contact Us in the Developer Portal. In the Category section, select **"Amazon Data Portability"**. In the Topic section, select **"Allowlisting & Integration Updates"**. Provide details related to your HTTPS endpoints.

## ERROR RESPONSES AND SCHEMAS

The Application must handle any standard HTTP response code that could result from a web service call. All APIs return an HTTP response code of 200 or 201 if the call was successfully received and processed. Any errors that occurred during processing are detailed in the response with corresponding status code.

---

|   | HTTP Code          | Category, Type & Message   | Details  | Schema                        |
|---|--------------------|--|--|-------------------------------|
| 1 | 400<br>Bad Request | Category: BAD_REQUEST<br><br>Type: INVALID_PARAMETERS<br><br>Message: Parameters provided for this request are invalid | Security profile id or customer id from your access token, or the scope id from path parameters may be invalid for the List Data Query Records request.<br><br>Verify that the query was created for the scope id you've provided as path parameter. Verify that the access token is generated using the right customer's authorization code and your valid security profile credentials.                        | <a href="#">ErrorResponse</a> |
| 2 | 400<br>Bad Request | Category: BAD_REQUEST<br><br>Type: INVALID_MAX_RESULTS<br><br>Message: Max results value is outside limits             | The request query parameter for <code>maxResults</code> has an invalid value.<br><br>Verify that you're using a <code>maxResults</code> value within defined limits.   | <a href="#">ErrorResponse</a> |
| 3 | 400<br>Bad Request | Category: BAD_REQUEST<br><br>Type: INVALID_NEXT_PAGE<br><br>Message: Invalid next page token                           | The request query parameter for <code>nextPageToken</code> isn't valid.<br><br>Verify that the token is correctly set, or remove it entirely to retrieve the first page again.   | <a href="#">ErrorResponse</a> |
| 4 | 403<br>Forbidden   | Category: FORBIDDEN<br><br>Type: ACCESS_DENIED<br><br>Message: App is not authorized to do this operation              | Access token doesn't include required permissions for this operation, or is expired.<br><br>Using the right customer's authorization code and your valid security profile credentials, verify that the access token is generated for the required scope id. If the customer didn't provide consent for the scope id, your Application can't request their data. If token is expired, generate a new valid token. | <a href="#">ErrorResponse</a> |
| 5 | 403<br>Forbidden   | Category: FORBIDDEN<br><br>Type: MISSING_ACCESS_TOKEN<br><br>Message: Access token not provided in request             | Access token hasn't been provided in the authorization header, is null, or empty.<br><br>Add a valid access token in the authorization request header.   | <a href="#">ErrorResponse</a> |
| 6 | 403<br>Forbidden   | Category: FORBIDDEN<br><br>Type: APP_NOT_ALLOWLISTED<br><br>Message: App is not allowlisted                            | Your Application doesn't have permission to do this operation.<br><br>Verify that your Data Portability allowlisting process is completed.   | <a href="#">ErrorResponse</a> |
| 7 | 403<br>Forbidden   | Category: FORBIDDEN<br><br>Type: SCOPE_NOT_ENABLED<br><br>Message: Scope not enabled for app                           | Scope isn't enabled for usage by your Application.<br><br>Verify that your Data Portability allowlisting process is complete. If the error persists, sign in to your Amazon Developer account. Go to <a href="#">Contact Us</a> . In the Category section, select <b>"Amazon Data Portability"</b> . In the Topic section, select <b>"Technical Issues"</b> .  | <a href="#">ErrorResponse</a> |
| 8 | 403<br>Forbidden   | Category: FORBIDDEN<br><br>Type: QUERY_NOT_COMPLETE<br><br>Message: Query is not completed                             | Query isn't complete. You can't perform List Data Query Records operation on a query that is in progress or canceled.<br><br>Wait for the query to reach a final state, by monitoring the response notifications, before retrying your API request. If the query is canceled, your Application can't access the data.  | <a href="#">ErrorResponse</a> |

|    |                  |  |   |                               |
|----|------------------|--|---|-------------------------------|
| 9  | 403<br>Forbidden | <p>Category: FORBIDDEN</p> <p>Type: ACCESS_TIME_ELAPSED</p> <p>Message: Access time for this query has elapsed</p>             | <p>The period of time for requesting the data of this query has elapsed.</p> <p>Create a new query.</p>   | <a href="#">ErrorResponse</a> |
| 10 | 403<br>Forbidden | <p>Category: FORBIDDEN</p> <p>Type: APP_IDENTIFICATION_FAILURE</p> <p>Message: Failed to identify the app</p>                  | <p>Your Application couldn't be identified.</p> <p>Verify that your Data Portability allowlisting process is completed, then retry your request. If the error persists, sign in to your Amazon Developer account. Go to <a href="#">Contact Us</a>. In the Category section, select "<b>Amazon Data Portability</b>". In the Topic section, select "<b>Technical Issues</b>".</p> | <a href="#">ErrorResponse</a> |
| 11 | 403<br>Forbidden | <p>Category: FORBIDDEN</p> <p>Type: MISSING_AUTHORIZATION_HEADER</p> <p>Message: Authorization header is missing or empty</p>  | <p>Authorization header is missing from your request, or is empty.</p> <p>Verify that your requests has a valid access token in authorization header.</p>   | <a href="#">ErrorResponse</a> |
| 12 | 403<br>Forbidden | <p>Category: FORBIDDEN</p> <p>Type: BLOCKED_REQUEST</p> <p>Message: Request blocked for security reasons</p>                   | <p>Your request was blocked by security scanners.</p> <p>Retry the request. If the error persists, sign in to your Amazon Developer account. Go to <a href="#">Contact Us</a>. In the Category section, select "<b>Amazon Data Portability</b>". In the Topic section, select "<b>Technical Issues</b>".</p>  | <a href="#">ErrorResponse</a> |
| 13 | 404<br>Not Found | <p>Category: RESOURCE_NOT_FOUND</p> <p>Type: SECURITY_PROFILE_NOT_FOUND</p> <p>Message: Security profile id does not exist</p> | <p>The security profile from access token couldn't be found.</p> <p>Verify that the access token is generated using valid credentials of your security profile created at onboarding.</p>   | <a href="#">ErrorResponse</a> |
| 14 | 404<br>Not Found | <p>Category: RESOURCE_NOT_FOUND</p> <p>Type: QUERY_ID_NOT_FOUND</p> <p>Message: Query id does not exist</p>                    | <p>Query id provided as parameter couldn't be found.</p> <p>Verify that the query id corresponds with the one returned by Create Data Query API.</p>  | <a href="#">ErrorResponse</a> |

|    |                          |  |  |                               |
|----|--------------------------|--|--|-------------------------------|
| 15 | 404<br>Not Found         | Category:<br>RESOURCE_NOT_FOUND<br><br>Type:<br>SCOPE_ID_NOT_FOUND<br><br>Message: Scope id does not exist           | Scope id provided as parameter couldn't be found.<br><br>Review the Amazon Data Portability Scopes list and verify that the provided scope id is valid.  | <a href="#">ErrorResponse</a> |
| 16 | 404<br>Not Found         | Category:<br>RESOURCE_NOT_FOUND<br><br>Type:<br>RESOURCE_NOT_FOUND<br><br>Message: Invalid URI or unsupported method | Your request's URI is invalid or the REST method doesn't exist for this path.<br><br>Review Data Portability API References verify that you're calling the right URI, and using the right REST method.   | <a href="#">ErrorResponse</a> |
| 17 | 409<br>Conflict          | Category: CONFLICT<br><br>Type:<br>REQUEST_CONFLICT<br><br>Message: There is a conflicting request in progress       | There is a conflicting request in progress for the same access token scope id and customer id.<br><br>Validate that the request has the intended scope id and customer id. If not, adjust request as needed. Otherwise, wait for the existing request to reach a final state by monitoring the response notifications. | <a href="#">ErrorResponse</a> |
| 18 | 413<br>Content Too Large | Category:<br>CONTENT_TOO_LARGE<br><br>Type:<br>REQUEST_TOO_LARGE<br><br>Message: Payload size limit exceeded         | Your request payload size exceeds the maximum value.<br><br>Review Data Portability API References and verify that you provide only the required parameters with valid values.   | <a href="#">ErrorResponse</a> |
| 19 | 429<br>Too Many Requests | Category:<br>TOO_MANY_REQUESTS<br><br>Type:<br>TOO_MANY_REQUESTS<br><br>Message: Requests rate limit exceeded        | The request is throttled due to multiple requests in a given amount of time.<br><br>Retry your request.  | <a href="#">ErrorResponse</a> |
| 20 | 429<br>Too Many Requests | Category:<br>TOO_MANY_REQUESTS<br><br>Type: QUOTA_EXCEEDED<br><br>Message: Daily quota exceeded                      | Your Application's daily quota for this scope was exceeded for this API.<br><br>Review your requests' strategy and align it with the Amazon Data Portability API limits.   | <a href="#">ErrorResponse</a> |
| 21 | 429<br>Too Many Requests | Category: THROTTLED<br><br>Type:<br>TOO_MANY_REQUESTS<br><br>Message: Requests rate limit exceeded                   | Your Application's rate limits for this scope was exceeded for this API.<br><br>Review your requests' strategy and align it with the Amazon Data Portability API limits.   | <a href="#">ErrorResponse</a> |

|    |                              |   |  |                               |
|----|------------------------------|---|--|-------------------------------|
| 22 | 500<br>Internal Server Error | Category:<br>INTERNAL_SERVER_ERROR<br><br>Type:<br>MISSING_PARAMETER<br><br>Message: Required parameter not provided in request                                 | One of the mandatory parameters from the API operation is missing.<br><br>Review API parameters, update your request, and retry your request. If the error persists, sign in to your Amazon Developer account. Go to <a href="#">Contact Us</a> . In the Category section, select <b>"Amazon Data Portability"</b> . In the Topic section, select <b>"Technical Issues"</b> .  | <a href="#">ErrorResponse</a> |
| 23 | 500<br>Internal Server Error | Category:<br>INTERNAL_SERVER_ERROR<br><br>Type:<br>INTERNAL_SERVER_ERROR<br><br>Message: Unexpected internal server exception                                   | An unexpected exception was encountered.<br><br>Retry your request. If the error persists, sign in to your Amazon Developer account. Go to <a href="#">Contact Us</a> . In the Category section, select <b>"Amazon Data Portability"</b> . In the Topic section, select <b>"Technical Issues"</b> .  | <a href="#">ErrorResponse</a> |
| 24 | 500<br>Internal Server Error | Category:<br>INTERNAL_SERVER_ERROR<br><br>Type:<br>BLANK_SECURITY_PROFILE_ID<br><br>Message: Security profile id is missing, empty or contains only whitespaces | The security profile id provided through access token is missing, empty, or contains only whitespaces.<br><br>Verify that the access token is generated using the security profile credentials of your Application, then retry your request. If the error persists, sign in to your Amazon Developer account. Go to <a href="#">Contact Us</a> . In the Category section, select <b>"Amazon Data Portability"</b> . In the Topic section, select <b>"Technical Issues"</b> . | <a href="#">ErrorResponse</a> |
| 25 | 500<br>Internal Server Error | Category:<br>INTERNAL_SERVER_ERROR<br><br>Type: INVALID_API_PATH<br><br>Message: Invalid API path   | The provided API path isn't valid.<br><br>Review Data Portability API References and verify that you use the right API path, then retry your request. If the error persists, sign in to your Amazon Developer account. Go to <a href="#">Contact Us</a> . In the Category section, select <b>"Amazon Data Portability"</b> . In the Topic section, select <b>"Technical Issues"</b> .  | <a href="#">ErrorResponse</a> |
| 26 | 500<br>Internal Server Error | Category:<br>INTERNAL_SERVER_ERROR<br><br>Type: BLANK_SCOPE_ID<br><br>Message: Scope id is missing, empty or contains only whitespaces                          | The scopeId path parameter from the request is missing, empty, or contains only whitespaces.<br><br>Verify that path of the request includes a valid scope id, then retry your request. If the error persists, sign in to your Amazon Developer account. Go to <a href="#">Contact Us</a> . In the Category section, select <b>"Amazon Data Portability"</b> . In the Topic section, select <b>"Technical Issues"</b> .  | <a href="#">ErrorResponse</a> |
| 27 | 500<br>Internal Server Error | Category:<br>INTERNAL_SERVER_ERROR<br><br>Type:<br>BLANK_CUSTOMER_ID<br><br>Message: Customer id missing, empty or contains only whitespaces                    | The Amazon customer id provided through access token is missing, empty, or contains only whitespaces.<br><br>Verify that the access token is generated using the code returned in customer's authorization request, then retry your request. If the error persists, sign in to your Amazon Developer account. Go to <a href="#">Contact Us</a> . In the Category section, select <b>"Amazon Data Portability"</b> . In the Topic section, select <b>"Technical Issues"</b> . | <a href="#">ErrorResponse</a> |

|    |                              |  |  |                               |
|----|------------------------------|--|--|-------------------------------|
| 28 | 500<br>Internal Server Error | Category:<br>INTERNAL_SERVER_ERROR<br><br>Type: BLANK_QUERY_ID<br><br>Message: Query id is missing, empty or contains only whitespaces | queryId path parameter is missing, empty or contains only whitespaces.<br><br>Verify that you provide a query id in API path, then retry your request. If the error persists, sign in to your Amazon Developer account. Go to <a href="#">Contact Us</a> . In the Category section, select <b>"Amazon Data Portability"</b> . In the Topic section, select <b>"Technical Issues"</b> . | <a href="#">ErrorResponse</a> |
| 29 | 500<br>Internal Server Error | Category:<br>INTERNAL_SERVER_ERROR<br><br>Type:<br>API_CONFIGURATION_ERROR<br><br>Message: Failed to connect to server                 | Encountered an internal API configuration error.<br><br>Retry the request. If the error persists, sign in to your Amazon Developer account. Go to <a href="#">Contact Us</a> . In the Category section, select <b>"Amazon Data Portability"</b> . In the Topic section, select <b>"Technical Issues"</b> .   | <a href="#">ErrorResponse</a> |
| 30 | 500<br>Internal Server Error | Category:<br>INTERNAL_SERVER_ERROR<br><br>Type:<br>AUTHORIZATION_CONFIGURATION_ERROR<br><br>Message: Failed to authenticate the app    | Failed to connect to authorizer.<br><br>Retry the request. If the error persists, sign in to your Amazon Developer account. Go to <a href="#">Contact Us</a> . In the Category section, select <b>"Amazon Data Portability"</b> . In the Topic section, select <b>"Technical Issues"</b> .   | <a href="#">ErrorResponse</a> |
| 31 | 500<br>Internal Server Error | Category:<br>INTERNAL_SERVER_ERROR<br><br>Type:<br>AUTHORIZATION_FAILURE<br><br>Message: Failed to authenticate the app                | Encountered error during Application authentication.<br><br>Retry the request and ensure the authentication token is valid. If the error persists, sign in to your Amazon Developer account. Go to <a href="#">Contact Us</a> . In the Category section, select <b>"Amazon Data Portability"</b> . In the Topic section, select <b>"Technical Issues"</b> .                            | <a href="#">ErrorResponse</a> |
| 32 | 500<br>Internal Server Error | Category:<br>INTERNAL_SERVER_ERROR<br><br>Type:<br>INTEGRATION_FAILURE<br><br>Message: Failed to connect to server                     | Encountered an internal server error.<br><br>Retry the request. If the error persists, sign in to your Amazon Developer account. Go to <a href="#">Contact Us</a> . In the Category section, select <b>"Amazon Data Portability"</b> . In the Topic section, select <b>"Technical Issues"</b> .  | <a href="#">ErrorResponse</a> |
| 33 | 504<br>Gateway Timeout       | Category:<br>GATEWAY_TIMEOUT<br><br>Type:<br>INTEGRATION_TIMEOUT<br><br>Message: Request timed out                                     | Your request timed out.<br><br>Retry the request. If the error persists, sign in to your Amazon Developer account. Go to <a href="#">Contact Us</a> . In the Category section, select <b>"Amazon Data Portability"</b> . In the Topic section, select <b>"Technical Issues"</b> .  | <a href="#">ErrorResponse</a> |

These are all known errors that can be returned. If you encounter an error not present in the table, start by retrying the error. If the error persists, sign in to your Amazon Developer account. Go to [Contact Us](#). In the Category section, select **"Amazon Data Portability"**. In the Topic section, select **"Technical Issues"**.

#### Retrying errors:

By default, the API has no retry configuration added. If you received a response with 429, 500, or 504 HTTP status code, make a retry request. If you want to retry multiple times, we recommend that you implement an exponential backoff approach up to a defined limit, and then log the error and proceed with a manual follow-up and investigation. For example, time your retries in this time intervals: 1s, 2s, 4s, 10s, and 30s. The actual backoff times and limit depends on your business processes.

## DEFINITIONS

### CreateDataQueryOutput

**The result of a create data query request.**

|   | Name                  | Description   | Schema |
|---|-----------------------|---|--------|
| 1 | id<br><i>required</i> | The queryId of the result specific to a customer and scope. | UUID   |

## DataQueryRecord

**A collection of data that indicates an entry with data for a customer query.**

|   | Name                      | Description  | Schema |
|---|---------------------------|--|--------|
| 1 | schema<br><i>required</i> | The <a href="#">S3 Presigned URLs</a> to schema file that is available for download. | string |
| 2 | file<br><i>required</i>   | The <a href="#">S3 Presigned URLs</a> to data file that is available for download.   | string |

## DataQueryStatus

**A value that indicates the final status of the Create Query request.**

**Type:** enum

|   | Value     | Description  |
|---|-----------|--|
| 1 | COMPLETED | Indicates that the query data has been successfully collected, and you can proceed to list records.  |
| 2 | CANCELED  | Indicates that the query data results aren't complete due to missing requirements. Possible causes: (1) The customer authorization has expired, (2) The customer has manually revoked the authorization, or (3) The customer account is on hold. |

## ErrorResponse

**Format for an error response.**

|   | Name                        | Description                                   | Schema |
|---|-----------------------------|---|--------|
| 1 | category<br><i>required</i> | The category of an error.                     | string |
| 2 | type<br><i>required</i>     | The type of an error.                         | string |
| 3 | message<br><i>required</i>  | A message that describes the error condition. | string |

## ListDataQueryRecordsOutput

**The result of a create list query records.**

|   | Name                       | Description                           | Schema                                    |
|---|----------------------------|---------------------------------------|---|
| 1 | records<br><i>required</i> | The records that matched the queryId. | < <a href="#">DataQueryRecord</a> > array |

## RESPONSENOTIFICATIONSUBJECT

The subject of the notification response with the version number appended at the end. Fixed value.

Type: String

Value: Data Portability Notification 1.0

## RESPONSENOTIFICATIONMESSAGE

The message body of the notification response.

Type: String (JSON converted to String)

Structure specific for **version 1.0**:

|   | Name                       | Description   | Schema                          |
|---|----------------------------|---|---------------------------------|
| 1 | id<br><i>required</i>      | The queryId for which the notification has been sent.   | string                          |
| 2 | version<br><i>required</i> | Indicates the version Id for the response notification. | string                          |
| 3 | status<br><i>required</i>  | Indicates the status of the data query.                 | <a href="#">DataQueryStatus</a> |

## Available scopes

(in format - <https://developer.amazon.com/docs/amazon-data-portability/intro-workflow.html>)

**Blink Network Schema :**

|   | A             | B                        | C                                | D                        |
|---|---------------|--------------------------|----------------------------------|--------------------------|
| 1 |               | <b>Schema Field Name</b> | <b>Schema Field Description</b>  | <b>Example</b>           |
| 2 | Schema Fields | createdAt                | Timestamp of record creation.    | 2021-09-29T11:04:43.305Z |
| 3 | Schema Fields | updatedAt                | Timestamp of last record update. | 2021-09-29T11:04:43.305Z |
| 4 | Schema Fields | name                     | Displayed network (system) name. | My Network               |
| 5 | Schema Fields | armed                    | Network armed or not.            | TRUE                     |

**Blink Network Schema sample json:**

```
[
  {
    "createdAt": "2025-07-31T13:27:41Z",
    "updatedAt": "2025-07-31T13:27:41Z",
    "name": "My Network",
    "armed": true
  },
]
```

**Blink Program schema:**



|    | A                             | B             | C                           | D   | E  |
|----|-------------------------------|---------------|-----------------------------|---|--|
| 1  |                               |               | <b>Schema Field Name</b>    | <b>Schema Field Description</b>           | <b>Example</b>   |
| 2  | Name of the program schedule. | Schema Fields | createdAt                   | Timestamp of record creation.             | 2021-09-29T11:04:43.305Z   |
| 3  | Name of the program schedule. | Schema Fields | updatedAt                   | Timestamp of last record update.          | 2021-09-29T11:04:43.305Z   |
| 4  | Name of the program schedule. | Schema Fields | name                        | Name of the program schedule.             | My Schedule  |
| 5  | Name of the program schedule. | Schema Fields | data                        | Schedule definition.                      | {       "name": "Schedule for HOME",       "format": "v1",       "schedule": [         {           "dow": [             "sun",             "mon",             "tue",             "wed",             "thu",             "fri",             "sat"           ],           "devices": [],           "time": "2025-04-30 21:45:00 +0000",           "action": "arm"         }       ]     } |
| 6  | Name of the program schedule. | Schema Fields | data.name                   | Name of the schedule.                     | My Program   |
| 7  | Name of the program schedule. | Schema Fields | data.format                 | Version of the schedule.                  | v1   |
| 8  | Name of the program schedule. | Schema Fields | data.schedule[]             | Definition of the schedule.               | []   |
| 9  | Name of the program schedule. | Schema Fields | data.schedule[].action      | Action to take for this schedule.         | arm  |
| 10 | Name of the program schedule. | Schema Fields | data.schedule[].dow         | Days of the week to execute the schedule. | ["sun", "mon"]   |
| 11 | Name of the program schedule. | Schema Fields | data.schedule[].runTimeDate | Time of the day to execute the schedule.  | 2025-06-12T04:00:00Z   |
| 12 | Name of the program schedule. | Schema Fields | status                      | Status of the program schedule.           | active   |
| 13 | Name of the program schedule. | Schema Fields | networkName                 | Associated network (system).              | My Network   |

#### Blink Program schema JSON:

```
[
  {
    "createdAt": "2025-07-31T13:27:41Z",
    "updatedAt": "2025-07-31T13:27:41Z",
    "name": "My Program",
    "data": {
      "name": "Schedule for Home",
      "format": "v1",
      "schedule": [
        {
          "action": "arm",
          "dow": [
            "sun",
            "mon",
            "tue",
            "wed",
            "thu",
            "fri",
            "sat"
          ],
          "runTimeDate": "2025-06-12T04:00:00Z"
        }
      ]
    },
    "status": "active",
    "networkName": "My Network"
  },
]
```

Blink ScheduleAction.schema.

|               | [3] Schema Fields |   |                          |
|---------------|-------------------|---|--------------------------|
|               | Schema Field Name | Schema Field Description                    | Example                  |
| Schema Fields | createdAt         | Timestamp of record creation.               | 2021-09-29T11:04:43.305Z |
| Schema Fields | updatedAt         | Timestamp of last record update.            | 2021-09-29T11:04:43.305Z |
| Schema Fields | executeTime       | Time to execute the action.                 | "23:30"                  |
| Schema Fields | executeDayOfWeek  | Day to execute the action.                  | mon                      |
| Schema Fields | action            | Action to execute.                          | arm                      |
| Schema Fields | status            | Status of this action.                      | active                   |
| Schema Fields | programName       | Name of the scheduled action configuration. | My Program               |
| Schema Fields | networkName       | Associated network (system).                | My Network               |

```
[
  {
    "createdAt": "2025-07-31T13:27:41Z",
    "updatedAt": "2025-07-31T13:27:41Z",
    "executeTime": "23:00",
    "executeDayOfWeek": "mon",
    "action": "arm",
    "status": "active",
    "programName": "My Program",
    "networkName": "My Network"
  },
  {
    "createdAt": "2025-07-31T13:27:40Z",
    "updatedAt": "2025-07-31T13:27:40Z",
    "executeTime": "23:00",
    "executeDayOfWeek": "mon",
    "action": "arm",
    "status": "active",
    "programName": "My Program",
    "networkName": "My Network"
  }
]
```

Blink Media.schema

|               | Schema Field Name        | Schema Field Description                           | Example                  |
|---------------|--------------------------|--|--------------------------|
| Schema Fields | eventDate                | Timestamp of record creation.                      | 2021-09-29T11:04:43.305Z |
| Schema Fields | updatedAt                | Timestamp of last record update.                   | 2021-09-29T11:04:43.305Z |
| Schema Fields | deletedAt                | Timestamp of record deletion.                      | 2021-09-29T11:04:43.305Z |
| Schema Fields | mediaId                  | Media record ID.                                   | 12345                    |
| Schema Fields | type                     | Type of media.                                     | video                    |
| Schema Fields | triggeredBy              | Originating source/operation that media came from. | liveview                 |
| Schema Fields | deviceName               | Name of device at time of media creation.          | My Camera                |
| Schema Fields | networkName              | Name of network at time of media creation.         | My Network               |
| Schema Fields | deviceSerialNumberMasked | Device serial number.                              | *****02J6                |
| Schema Fields | lengthSeconds            | Length on the media in seconds.                    | 5                        |
| Schema Fields | size                     | Size of media in bytes.                            | 544824                   |
| Schema Fields | viewed                   | Timestamp for when the media was viewed.           | 2021-09-29T11:04:43.305Z |
| Schema Fields | watched                  | Whether media has been watched.                    | TRUE                     |
| Schema Fields | downloadCount            | Count of how many times media has been downloaded. | 6                        |

```
{
  "mediaId": 1,
  "eventDate": "2025-07-31T13:27:41Z",
  "updatedAt": "2025-07-31T13:27:41Z",
  "deletedAt": "2025-07-31T13:27:41Z",
  "type": "video",
  "triggeredBy": "liveview",
  "deviceName": "My Camera",
  "networkName": "My Network",
  "deviceSerialNumberMasked": "*****02J6",
  "lengthSeconds": 6,
  "size": 544824,
  "viewed": "2025-07-31T13:27:41Z",
  "watched": true,
  "downloadCount": 6
}
```

Blink MediaInfo.schema.

|                     |               | [5] Schema Fields          |   |                          |
|---------------------|---------------|----------------------------|---|--------------------------|
|                     |               | Schema Field Name          | Schema Field Description  | Example                  |
| blink-cloud-service | Schema Fields | eventDate                  | Timestamp of record creation.   | 2021-09-29T11:04:43.305Z |
| blink-cloud-service | Schema Fields | updatedAt                  | Timestamp of last record update.                                      | 2021-09-29T11:04:43.305Z |
| blink-cloud-service | Schema Fields | mediaId                    | Media record ID.  | 12345                    |
| blink-cloud-service | Schema Fields | audioCapabilities          | Audio capabilities of device that generated associated media.         | oneway                   |
| blink-cloud-service | Schema Fields | terminationReason          | Reason for clip termination.  | normal                   |
| blink-cloud-service | Schema Fields | deviceLengthSettingSeconds | Video length/duration configuration of device when media was created. | 10                       |
| blink-cloud-service | Schema Fields | uploadTimeMs               | Upload time for associated media.                                     | 12                       |
| blink-cloud-service | Schema Fields | planType                   | Associated Plan Type (of device/account) when media was created.      | paid                     |
| blink-cloud-service | Schema Fields | planSubtype                | Associated Plan Subtype (of device/account) when media was created.   | plus                     |
| blink-cloud-service | Schema Fields | deletedByClient            | Associated Client that deleted associated media.                      | My Client Name           |

```
[
  {
    "mediaId": 1,
    "eventDate": "2025-07-31T13:27:41Z",
    "updatedAt": "2025-07-31T13:27:41Z",
    "audioCapabilities": "oneway",
    "terminationReason": "normal",
    "deviceLengthSettingSeconds": 0,
    "uploadTimeMs": 0,
    "planType": "paid",
    "planSubtype": "plus",
    "deletedByClient": "My Client"
  },
]
```

Blink MediaHistory.schema

|   | A                        | B   | C                        |
|---|--------------------------|---|--------------------------|
| 1 | <b>Schema Field Name</b> | <b>Schema Field Description</b>                   | <b>Example</b>           |
| 2 | eventDate                | Timestamp of when media was recorded.             | 2021-09-29T11:04:43.305Z |
| 3 | deviceSerialNumberMasked | Device serial number.                             | *****02J6                |
| 4 | length                   | Length of media in seconds.                       | 5                        |
| 5 | size                     | Media size in bytes.                              | 5000                     |
| 6 | uploadTime               | Upload time in ms.                                | 5000                     |
| 7 | deletedByClient          | Client that deleted the clip (0 if auto deleted). | My Client                |
| 8 | fwVersion                | Firmware version at recording time.               | 8.57                     |

```
[
  {
    "eventDate": "2025-05-19T19:45:44Z",
    "deviceSerialNumberMasked": "*****02J7",
    "length": 5,
    "size": 50000,
    "uploadTime": 50000,
    "deletedByClient": "My Network",
    "fwVersion": "8.57"
  },
]
```

Blink Command.schema

|    | A                        | B  | C   |
|----|--------------------------|--|---|
| 1  | <b>Schema Field Name</b> | <b>Schema Field Description</b>  | <b>Example</b>  |
| 2  | eventDate                | Timestamp of record creation.  | 2021-09-29T11:04:43.305Z  |
| 3  | updatedAt                | Timestamp of last record update.   | 2021-09-29T11:04:43.305Z  |
| 4  | command                  | Type of command issued.  | arm   |
| 5  | stateStage               | Stage that command is currently in.  | rest  |
| 6  | stateCondition           | The condition that the command is in.  | done  |
| 7  | totalDurationSeconds     | Duration command took to complete.   | 15  |
| 8  | byWhom                   | Identifier of client that initiated the command.   | Ctdis iPad (2) - 6.14.0 (2206201618)<br>#e648b4a6e-mod - liveview |
| 9  | deviceType               | Target (device) this command is associated with (if this is defined, deviceName is defined and cameraName is not). | Mini  |
| 10 | deviceName               | Name of the device the command executed on (if this is defined, deviceType is defined and cameraName is not).      | My Camera   |
| 11 | cameraName               | Name of the camera the device executed on (if this is defined, deviceType and deviceName are not).                 | My Camera   |
| 12 | networkName              | Associated network (system).   | My Network  |

```
[
  {
    "eventDate": "2025-07-31T13:27:41Z",
    "updatedAt": "2025-07-31T13:27:41Z",
    "command": "thumbnail",
    "stateStage": "rest",
    "stateCondition": "done",
    "totalDurationSeconds": 4,
    "byWhom": "Ctdis iPad (2) - 6.14.0 (2206201618) #e648b4a6e-mod - liveview",
    "deviceType": "Mini",
    "deviceName": "My Device",
    "cameraName": "My Camera",
    "networkName": "My Network"
  }
].
```

Blink Camera.schema.

---

|    | A                          | B  | C                        |
|----|----------------------------|--|--------------------------|
| 1  | <b>Schema Field Name</b>   | <b>Schema Field Description</b>                                      | <b>Example</b>           |
| 2  | createdAt                  | Timestamp of record creation.  | 2021-09-29T11:04:43.305Z |
| 3  | updatedAt                  | Timestamp of last record update.                                     | 2021-09-29T11:04:43.305Z |
| 4  | fwVersion                  | Current firmware version.  | 10.6                     |
| 5  | deviceSerialNumberMasked   | Device serial number.  | *****02J6                |
| 6  | macAddress                 | MAC(network) address of camera.                                      | f4:6d:03:d8:00:e7        |
| 7  | thumbnail                  | Thumbnail identifier for camera.                                     | 1639713338               |
| 8  | name                       | Customer provided friendly name for camera.                          | My Camera                |
| 9  | onboarded                  | Flag to indicate whether onboarding has been successfully completed. | TRUE                     |
| 10 | enabled                    | Whether motion detection is enabled on camera.                       | TRUE                     |
| 11 | armed                      | Whether is armed for activity (per network).                         | TRUE                     |
| 12 | motionSensitivity          | Sensitivity for motion sensor.                                       | 20                       |
| 13 | cameraRetriggerTime        | Retrigger time for camera motion.                                    | 10                       |
| 14 | maxVideoLengthSeconds      | Motion capture video duration in seconds.                            | 10                       |
| 15 | tempAlarmEnable            | Alerting enabled when temperature threshold is breached.             | TRUE                     |
| 16 | tempAlertIntervalHours     | Time in hours between temperature alerts.                            | 1                        |
| 17 | tempAdjustFahrenheit       | Temperature reading adjustment (offset).                             | 0                        |
| 18 | tempMinThresholdFahrenheit | Lower bound for temperature alert.                                   | 20                       |
| 19 | tempMaxThresholdFahrenheit | Upper bound for temperature alert.                                   | 110                      |
| 20 | illuminatorEnable          | Enable illuminator when capturing video.                             | on                       |
| 21 | illuminatorIntensity       | Brightness of illuminator.   | 46                       |
| 22 | lastBatteryAlert           | Timestamp for last sent battery alert.                               | 2021-09-29T11:04:43.305Z |
| 23 | volumeControl              | Used to control volume level.  | 60                       |
| 24 | recordAudioEnable          | Enable audio capture when recording motion clips.                    | TRUE                     |
| 25 | maxResolution              | Resolution to record video at.                                       | r720                     |
| 26 | wifiTimeout                | Specify the timeout duration (in seconds) for each retry.            | 1                        |
| 27 | wifiConnectRetryCount      | Specify the number of WiFi retries to attempt before giving up.      | 0                        |
| 28 | status                     | Current state/status of camera.                                      | done                     |
| 29 | wifiStrength               | Latest reported WiFi RSSI (strength) value.                          | -63                      |
| 30 | vo9Strength                | Vo9 network strength for camera.                                     | -41                      |
| 31 | syncModuleSignalStrength   | Latest reported LFR RSSI (strength) value.                           | -41                      |
| 32 | temperatureFahrenheit      | Latest reported camera temperature.                                  | 83                       |
| 33 | batteryVoltage             | Latest reported camera battery voltage.                              | 162                      |
| 34 | lastTempAlert              | Timestamp of last temperature alert sent.                            | 2021-09-29T11:04:43.305Z |
| 35 | tempAlertCount             | Number of temperature alerts sent.                                   | 0                        |
| 36 | lastWifiAlert              | Timestamp of last WiFi alert sent.                                   | 2021-09-29T11:04:43.305Z |
| 37 | wifiAlertCount             | Number of WiFi alerts sent.  | 0                        |
| 38 | lastLfrAlert               | Timestamp of last LFR event sent.                                    | 2021-09-29T11:04:43.305Z |
| 39 | lfrAlertCount              | Number of LFR alerts sent.   | 0                        |
| 40 | lastOfflineAlert           | Timestamp of last offline alert sent.                                | 2021-09-29T11:04:43.305Z |
| 41 | offlineAlertCount          | Number of offline alerts sent.                                       | 0                        |
| 42 | tempAlertState             | Temperature range state for camera.                                  | in_range                 |

|    |                  |   |                          |
|----|------------------|---|--------------------------|
| 43 | batteryState     | Battery state for camera.               | ok                       |
| 44 | batteryCheckTime | Timestamp for last battery state check. | 2021-09-29T11:04:43.305Z |
| 45 | cameraType       | Camera type.                            | XT                       |
| 46 | networkName      | Associated network (system).            | My Network               |
| 47 | networkType      | Type of network connection.             | wifi                     |

```
{
  "createdAt": "2025-07-31T13:27:41Z",
  "updatedAt": "2025-07-31T13:27:41Z",
  "deviceSerialNumberMasked": "*****02J6",
  "fwVersion": "10.16",
  "macAddress": "f4:6d:03:d8:00:e7",
  "thumbnail": "1639713338",
  "name": "My Camera",
  "onboarded": true,
  "motionSensitivity": 20,
  "enabled": true,
  "armed": true,
  "cameraRetriggerTime": 10,
  "maxVideoLengthSeconds": 5,
  "tempAlarmEnable": true,
  "tempAlertIntervalHours": 1,
  "tempAdjustFahrenheit": 0,
  "tempMinThresholdFahrenheit": 20,
  "tempMaxThresholdFahrenheit": 110,
  "illuminatorEnable": true,
  "illuminatorIntensity": 0,
  "lastBatteryAlert": "2025-07-31T13:27:41Z",
  "volumeControl": 60,
  "recordAudioEnable": true,
  "maxResolution": "r720",
  "wifiTimeout": 1,
  "wifiConnectRetryCount": 0,
  "status": "done",
  "wifiStrength": -63,
  "syncModuleSignalStrength": -41,
  "temperatureFahrenheit": 82,
  "batteryVoltage": 3.17,
  "lastTempAlert": "2025-07-31T13:27:41Z",
  "tempAlertCount": 0,
  "lastWifiAlert": "2025-07-31T13:27:41Z",
  "wifiAlertCount": 0,
  "lastLfrAlert": "2025-07-31T13:27:41Z",
  "lfrAlertCount": 0,
  "lastOfflineAlert": "2025-07-31T13:27:41Z",
  "offlineAlertCount": 0,
  "tempAlertState": "in range".
}
```

Blink CameraOption.schema



|    | A                                  | B  | C                        |
|----|------------------------------------|--|--------------------------|
| 1  | <b>Schema Field Name</b>           | <b>Schema Field Description</b>                              | <b>Example</b>           |
| 2  | createdAt                          | Timestamp of record creation.                                | 2021-09-29T11:04:43.305Z |
| 3  | updatedAt                          | Timestamp of last record update.                             | 2021-09-29T11:04:43.305Z |
| 4  | cameraName                         | Camera options record is associated with.                    | My Camera                |
| 5  | options                            | JSON field for storing dynamic configuration.                |                          |
| 6  | options.autoUpdateThumbnail        | Automatically update device thumbnail on every motion event. | TRUE                     |
| 7  | options.earlyNotification          | Send motion notification as soon as motion is detected.      | TRUE                     |
| 8  | options.privacyZonesEnabled        | Privacy zones is enabled for this device.                    | TRUE                     |
| 9  | options.smartDetectionEnabled      | Smart detection is enabled for this device.                  | TRUE                     |
| 10 | options.recordingEnabled           | Recording is enabled for this device.                        | TRUE                     |
| 11 | options.motionDetectionZoneEnabled | Motion detection zones are enabled for this device.          | TRUE                     |

```
[
  {
    "cameraName": "My Camera",
    "createdAt": "2025-07-31T13:27:41Z",
    "updatedAt": "2025-07-31T13:27:41Z",
    "options": {
      "autoUpdateThumbnail": true
    }
  }
]
```

Blink WiredCamera.schema

---

|    | A                        | B  | C                        |
|----|--------------------------|--|--------------------------|
| 1  | <b>Schema Field Name</b> | <b>Schema Field Description</b>  | <b>Example</b>           |
| 2  | createdAt                | Timestamp of record creation.  | 2021-09-29T11:04:43.305Z |
| 3  | updatedAt                | Timestamp of last record update.   | 2021-09-29T11:04:43.305Z |
| 4  | fwVersion                | Current firmware version.  | 10.16                    |
| 5  | deviceSerialNumberMasked | Device serial number.  | *****02J6                |
| 6  | macAddress               | MAC(network) address of camera.  | f4:6d:03:d8:00:e7        |
| 7  | ipAddress                | Current IP address reported by wired camera.                               | 8.8.8.8                  |
| 8  | thumbnail                | Thumbnail identifier for camera.   | 1639713338               |
| 9  | name                     | Customer provided friendly name for camera.                                | My Camera                |
| 10 | onboarded                | Flag to indicate whether onboarding has been successfully completed.       | TRUE                     |
| 11 | motionSensitivity        | Sensitivity for motion sensor.   | 20                       |
| 12 | retriggerTimeSeconds     | Retrigger time for wired camera motion.                                    | 30                       |
| 13 | armed                    | Armed to record on motion event.   | TRUE                     |
| 14 | maxClipLengthSeconds     | Motion capture video duration in seconds.                                  | 5                        |
| 15 | earlyTermination         | Terminate clip on lack of motion detected (from video, not motion sensor). | TRUE                     |
| 16 | earlyNotification        | Whether early notifications are enabled on the device.                     | TRUE                     |
| 17 | nightVisionControl       | Night vision infra-red sensitivity setting.                                | normal                   |
| 18 | illuminatorEnable        | Enable infra-red illuminator when capturing video.                         | TRUE                     |
| 19 | illuminatorIntensity     | Infra-red intensity setting.   | 4                        |
| 20 | volumeControl            | Speaker volume range.  | 5                        |
| 21 | recordAudioEnable        | Enable audio capture when recording motion clips.                          | TRUE                     |
| 22 | ledState                 | Configuration for what LED behavior the camera should have.                | on                       |
| 23 | lastHeartbeat            | Timestamp of last 'heartbeat' that device made to servers.                 | 2021-09-29T11:04:43.305Z |
| 24 | connectionStatus         | Current state/status of wired camera.                                      | online                   |
| 25 | wifiStrength             | Latest reported WiFi RSSI (strength) value.                                | -63                      |
| 26 | lastWifiAlert            | Timestamp of last WiFi alert sent.   | 2021-09-29T11:04:43.305Z |
| 27 | wifiAlertCount           | Number of WiFi alerts sent.  | 0                        |
| 28 | lastOfflineAlert         | Timestamp of last offline alert sent.                                      | 2021-09-29T11:04:43.305Z |
| 29 | offlineAlertCount        | Number of offline alerts sent.   | 0                        |
| 30 | cameraType               | Wired camera type.   | Mini                     |
| 31 | networkName              | Associated network (system).   | My Network               |

```
[
  {
    "createdAt": "2025-07-31T13:27:41Z",
    "updatedAt": "2025-07-31T13:27:41Z",
    "deviceSerialNumberMasked": "*****02J6",
    "cameraType": "Mini",
    "fwVersion": "10.16",
    "macAddress": "f4:6d:03:d8:00:e7",
    "ipAddress": "8.8.8.8",
    "name": "My Camera",
    "thumbnail": "1639713338",
    "onboarded": true,
    "armed": true,
    "ledState": "on",
    "connectionStatus": "online",
    "lastHeartbeat": "2025-07-31T13:27:41Z",
    "maxClipLengthSeconds": 5,
    "retriggerTimeSeconds": 30,
    "motionSensitivity": 20,
    "earlyTermination": true,
    "earlyNotification": true,
    "nightVisionControl": "normal",
    "illuminatorIntensity": 4,
    "recordAudioEnable": true,
    "volumeControl": 5,
    "wifiStrength": -63,
    "lastWifiAlert": "2025-07-31T13:27:41Z",
    "wifiAlertCount": 0,
    "lastOfflineAlert": "2025-07-31T13:27:41Z",
    "offlineAlertCount": 0,
    "networkName": "My Network"
  },

```

Blink WiredCameraOption.schema

|    | A                                      | B  | C                        |
|----|--|--|--------------------------|
| 1  | Schema Field Name                      | Schema Field Description                                     | Example                  |
| 2  | createdAt                              | Timestamp of record creation.                                | 2021-09-29T11:04:43.305Z |
| 3  | updatedAt                              | Timestamp of last record update.                             | 2021-09-29T11:04:43.305Z |
| 4  | cameraName                             | Name of camera.  | My Camera                |
| 5  | options                                | JSON field for storing dynamic configuration.                |                          |
| 6  | options.autoUpdateThumbnail            | Automatically update device thumbnail on every motion event. | TRUE                     |
| 7  | options.advancedMotionDetectionEnabled | Advanced motion detection is enabled for this device.        | TRUE                     |
| 8  | options.privacyZonesEnabled            | Privacy zones is enabled for this device.                    | TRUE                     |
| 9  | options.smartDetectionEnabled          | Smart detection is enabled for this device.                  | TRUE                     |
| 10 | options.recordingEnabled               | Recording is enabled for the doorbell.                       | TRUE                     |
| 11 | options.motionDetectionZoneEnabled     | Motion detection zones are enabled for this device.          | TRUE                     |

```
{
  "cameraName": "My Wired Camera",
  "createdAt": "2025-07-31T13:27:41Z",
  "updatedAt": "2025-07-31T13:27:41Z",
  "options": {
    "advancedMotionDetectionEnabled": true
  }
},
```

Blink Doorbell.schema.json

|    | A                        | B  | C                        |
|----|--------------------------|--|--------------------------|
| 1  | <b>Schema Field Name</b> | <b>Schema Field Description</b>                                      | <b>Example</b>           |
| 2  | createdAt                | Timestamp of record creation.  | 2021-09-29T11:04:43.305Z |
| 3  | updatedAt                | Timestamp of last record update.                                     | 2021-09-29T11:04:43.305Z |
| 4  | fwVersion                | Current firmware version.  | 1.25                     |
| 5  | deviceSerialNumberMasked | Device serial number.  | *****01GV                |
| 6  | macAddress               | MAC(network) address of doorbell.                                    | 74:ab:93:70:eb:0d        |
| 7  | ipAddress                | Current IP address reported by doorbell.                             | 8.8.8.8                  |
| 8  | thumbnail                | Thumbnail identifier for camera.                                     | 1639713338               |
| 9  | name                     | Customer provided friendly name for camera.                          | My Doorbell              |
| 10 | onboarded                | Flag to indicate whether onboarding has been successfully completed. | TRUE                     |
| 11 | motionSensitivity        | Sensitivity for motion sensor.                                       | 20                       |
| 12 | retriggerTime            | Retrigger time for doorbell motion.                                  | 30                       |
| 13 | illuminatorEnable        | Enable illuminator when capturing video.                             | off                      |
| 14 | illuminatorIntensity     | Brightness of LED illuminator (off, low(1), med(4), high(7)).        | 1                        |
| 15 | lastBatteryAlert         | Timestamp for last sent battery alert.                               | 2021-09-29T11:04:43.305Z |
| 16 | batteryAlertCount        | Number of battery alerts sent.                                       | 0                        |
| 17 | volumeControl            | Speaker volume range.  | 5                        |
| 18 | recordAudioEnable        | Enable audio capture when recording motion clips.                    | TRUE                     |
| 19 | maxResolution            | Resolution to record video at.                                       | r720                     |
| 20 | wifiTimeout              | The timeout duration (in seconds) for each retry.                    | 30                       |
| 21 | wifiConnectRetryCount    | The number of WiFi retries to attempt before giving up.              | 0                        |
| 22 | status                   | Current state/status of doorbell.                                    | done                     |
| 23 | wifiStrength             | Latest reported WiFi RSSI (strength) value.                          | -63                      |
| 24 | syncModuleSignalStrength | Latest reported LFR RSSI (strength) value.                           | -63                      |
| 25 | temperature              | Latest reported doorbell temperature.                                | 82                       |
| 26 | batteryVoltage           | Latest reported doorbell battery voltage.                            | 161                      |
| 27 | lastTempAlert            | Timestamp of last temperature alert sent.                            | 2021-09-29T11:04:43.305Z |
| 28 | tempAlertCount           | Number of temperature alerts sent.                                   | 0                        |
| 29 | wifiAlertCount           | Number of WiFi alerts sent.  | 0                        |
| 30 | lastLfrAlert             | Timestamp of last LFR event sent.                                    | 2021-09-29T11:04:43.305Z |
| 31 | lfrAlertCount            | Number of LFR alerts sent.   | 0                        |
| 32 | lastOfflineAlert         | Timestamp of last offline alert sent.                                | 2021-09-29T11:04:43.305Z |
| 33 | tempAlertState           | Temperature range state for doorbell.                                | in_range                 |
| 34 | batteryCheckTime         | Timestamp for last battery state check.                              | 2021-09-29T11:04:43.305Z |
| 35 | doorbellType             | Doorbell type.   | Blink Video Doorbell     |
| 36 | doorbellMode             | Which mode the doorbell is configured to.                            | lfr                      |
| 37 | networkName              | Associated network (system).   | My Network               |
| 38 |                          |  |                          |

```
[
  {
    "createdAt": "2025-07-31T13:27:41Z",
    "updatedAt": "2025-07-31T13:27:41Z",
    "deviceSerialNumberMasked": "*****02J6",
    "doorbellType": "Blink Video Doorbell",
    "fwVersion": "12.58",
    "macAddress": "74:ab:93:70:eb:0d",
    "ipAddress": "8.8.8.8",
    "name": "My Doorbell",
    "thumbnail": "1639713338",
    "onboarded": true,
    "status": "done",
    "maxResolution": "r720",
    "retriggerTime": 30,
    "motionSensitivity": 20,
    "illuminatorEnable": "off",
    "illuminatorIntensity": 1,
    "recordAudioEnable": true,
    "volumeControl": 5,
    "wifiStrength": -63,
    "syncModuleSignalStrength": -41,
    "lastLfrAlert": "2025-07-31T13:27:41Z",
    "lfrAlertCount": 1,
    "temperature": 82,
    "batteryVoltage": 3.15,
    "wifiAlertCount": 0,
    "lastOfflineAlert": "2025-07-31T13:27:41Z",
    "lastBatteryAlert": "2025-07-31T13:27:41Z",
    "batteryAlertCount": 0,
    "tempAlertState": "in_range",
    "batteryCheckTime": "2025-07-31T13:27:41Z",
    "wifiTimeout": 30,
    "wifiConnectRetryCount": 0,
    "doorbellMode": "lfr",
    "lastTempAlert": "2025-07-31T13:27:41Z",
    "tempAlertCount": 0,
    "networkName": "My Network"
  },
  .
]
```

Blink DoorbellOption.schema

|    | A                                      | B  | C                        |
|----|--|--|--------------------------|
| 1  | Schema Field Name                      | Schema Field Description                                     | Example                  |
| 2  | createdAt                              | Timestamp of record creation.                                | 2021-09-29T11:04:43.305Z |
| 3  | updatedAt                              | Timestamp of last record update.                             | 2021-09-29T11:04:43.305Z |
| 4  | doorbellName                           | Doorbell name.   | My Doorbell              |
| 5  | options                                | JSON field for storing dynamic configuration.                |                          |
| 6  | options.advancedMotionDetectionEnabled | Advanced motion detection is enabled for this device.        | TRUE                     |
| 7  | options.autoUpdateThumbnail            | Automatically update device thumbnail on every motion event. | TRUE                     |
| 8  | options.miniAsChimeEnabled             | Trigger chime sound on mini devices when doorbell is pushed. | TRUE                     |
| 9  | options.privacyZonesEnabled            | Privacy zones is enabled for this device.                    | TRUE                     |
| 10 | options.smartDetectionEnabled          | Smart detection is enabled for this device.                  | TRUE                     |
| 11 | options.recordingEnabled               | Recording is enabled for this device.                        | TRUE                     |
| 12 | options.motionDetectionZoneEnabled     | Motion detection zones are enabled for this device.          | TRUE                     |

```
[
  {
    "doorbellName": "My Doorbell",
    "createdAt": "2025-07-31T13:27:41Z",
    "updatedAt": "2025-07-31T13:27:41Z",
    "options": {
      "advancedMotionDetectionEnabled": true
    }
  }
].
```

Blink SyncModule.schema.

|    | A                        | B  | C                        |
|----|--------------------------|--|--------------------------|
| 1  | <b>Schema Field Name</b> | <b>Schema Field Description</b>                                      | <b>Example</b>           |
| 2  | createdAt                | Timestamp of record creation.  | 2021-09-29T11:04:43.305Z |
| 3  | updatedAt                | Timestamp of last record update.                                     | 2021-09-29T11:04:43.305Z |
| 4  | deletedAt                | Timestamp of record deletion.  | 2021-09-29T11:04:43.305Z |
| 5  | deviceSerialNumberMasked | Device serial number.  | *****02J6                |
| 6  | status                   | Current state/status of sync module.                                 | online                   |
| 7  | fwVersion                | Current firmware version.  | 12.5                     |
| 8  | ipAddress                | Current IP address reported by sync module.                          | 8.8.8.8                  |
| 9  | macAddress               | MAC(network) address of sync module.                                 | f4:6d:03:d8:00:e7        |
| 10 | osVersion                | OS version of sync module.   | 5.5.8                    |
| 11 | onboarded                | Flag to indicate whether onboarding has been successfully completed. | TRUE                     |
| 12 | lastHeartbeat            | Timestamp of last heartbeat.   | 2021-09-29T11:04:43.305Z |
| 13 | lastWifiAlert            | Timestamp of last WiFi alert sent.                                   | 2021-09-29T11:04:43.305Z |
| 14 | wifiAlertCount           | Number of WiFi alerts sent.  | 0                        |
| 15 | lastOfflineAlert         | Timestamp of last offline alert sent.                                | 2021-09-29T11:04:43.305Z |
| 16 | offlineAlertCount        | Number of offline alerts sent.                                       | 0                        |
| 17 | name                     | Customer provided friendly name for sync module.                     | My Sync Module           |
| 18 | networkName              | Associated network (system).   | My Network               |

```
[
  {
    "createdAt": "2025-07-31T13:27:41Z",
    "updatedAt": "2025-07-31T13:27:41Z",
    "deletedAt": "2025-07-31T13:27:41Z",
    "name": "My Sync Module",
    "fwVersion": "10.16",
    "macAddress": "f4:6d:03:d8:00:e7",
    "ipAddress": "8.8.8.8",
    "deviceSerialNumberMasked": "*****02J6",
    "status": "online",
    "onboarded": true,
    "lastHeartbeat": "2025-07-31T13:27:41Z",
    "osVersion": "5.5.8",
    "lastWifiAlert": "2025-07-31T13:27:41Z",
    "wifiAlertCount": 0,
    "lastOfflineAlert": "2025-07-31T13:27:41Z",
    "offlineAlertCount": 0,
    "networkName": "My Network"
  },
]
```

Blink PanTiltAccessory.schema

|    | A                        | B  | C                        |
|----|--------------------------|--|--------------------------|
| 1  | Schema Field Name        | Schema Field Description   | Example                  |
| 2  | createdAt                | Timestamp of record creation.                                    | 2021-09-29T11:04:43.305Z |
| 3  | updatedAt                | Timestamp of last record update.                                 | 2021-09-29T11:04:43.305Z |
| 4  | deviceSerialNumberMasked | Device serial number.  | *****02J6                |
| 5  | fwVersion                | Current firmware version.  | 10.16                    |
| 6  | status                   | Current state/status of pan tilt accessory.                      | online                   |
| 7  | type                     | Pan tilt accessory type.   | Pan/Tilt                 |
| 8  | calibrationState         | State of calibration pan tilt accessory is in.                   | calibrated               |
| 9  | lastCalibratedAt         | Timestamp of when pan tilt accessory was last calibrated.        | 2021-09-29T11:04:43.305Z |
| 10 | homePanAngleDegrees      | Starting pan angle for pan tilt accessory (home position).       | 90                       |
| 11 | homeTiltAngleDegrees     | Starting tilt angle for pan tilt accessory (home position).      | 180                      |
| 12 | targetName               | Target (device) type this lighting accessory is associated with. | Mini                     |
| 13 | deviceName               | Device this lighting accessory is associated with.               | My Wired Camera          |
| 14 | networkName              | Associated network (system).                                     | My Network               |

```
[
  {
    "createdAt": "2025-07-31T13:27:41Z",
    "updatedAt": "2025-07-31T13:27:41Z",
    "deviceSerialNumberMasked": "*****02J6",
    "fwVersion": "10.16",
    "status": "online",
    "type": "Pan/Tilt",
    "calibrationState": "calibrated",
    "lastCalibratedAt": "2025-07-31T13:27:41Z",
    "homePanAngleDegrees": 90,
    "homeTiltAngleDegrees": 180,
    "targetName": "Mini",
    "deviceName": "My Wired Camera",
    "networkName": "My Network"
  }
].
```

Blink LocalStorageStatus.schema

|    | A                      | B  | C                        |
|----|------------------------|--|--------------------------|
| 1  | Schema Field Name      | Schema Field Description   | Example                  |
| 2  | createdAt              | Timestamp of record creation.  | 2021-09-29T11:04:43.305Z |
| 3  | updatedAt              | Timestamp of last record update.   | 2021-09-29T11:04:43.305Z |
| 4  | usbAvailable           | Whether attached USB storage device is available.                          | TRUE                     |
| 5  | usbState               | Current state of the attached USB storage device.                          | enabled                  |
| 6  | usbStorageUsed         | Percent of USB storage available (calculated and provided by sync module). | 0                        |
| 7  | usbStorageUsedBlink    | Total storage (KB) used.   | 0                        |
| 8  | usbStorageUsedLs       | Storage (KB) used by local storage.  | 0                        |
| 9  | usbStorageUsedSmBackup | Storage (KB) used by sync module backup.                                   | 0                        |
| 10 | usbStorageUsedTotal    | Storage (KB) used in total on USB device.                                  | 0                        |
| 11 | usbFreeSpaceTotal      | Total storage (KB) free on USB device.                                     | 0                        |
| 12 | usbFreeSpaceRequired   | Required storage (KB).   | 0                        |
| 13 | usbTotalSize           | Total storage (KB) on USB device.  | 0                        |
| 14 | smBackupStatus         | Current sync module backup state.  | idle                     |
| 15 | networkName            | Associated network (system).   | My Network               |
| 16 |                        |  |                          |



```
[
  {
    "createdAt": "2025-07-31T13:27:41Z",
    "updatedAt": "2025-07-31T13:27:41Z",
    "usbAvailable": true,
    "usbState": "enabled",
    "usbStorageUsed": 0,
    "usbStorageUsedBlink": 0,
    "usbStorageUsedLs": 0,
    "usbStorageUsedSmBackup": 0,
    "usbStorageUsedTotal": 0,
    "usbFreeSpaceTotal": 0,
    "usbFreeSpaceRequired": 0,
    "usbTotalSize": 0,
    "smBackupStatus": "idle",
    "networkName": "My Network"
  },
]
```

Blink LocalConnectionCertificate schema

|   | A                 | B   | C                        |
|---|-------------------|---|--------------------------|
| 1 | Schema Field Name | Schema Field Description                                    | Example                  |
| 2 | createdAt         | Timestamp of record creation.                               | 2021-09-29T11:04:43.305Z |
| 3 | updatedAt         | Timestamp of last record update.                            | 2021-09-29T11:04:43.305Z |
| 4 | notBefore         | Timestamp of when the certificate is first able to be used. | 2021-09-29T11:04:43.305Z |
| 5 | notAfter          | Timestamp of when the certificate is last able to be used.  | 2021-09-29T11:04:43.305Z |
| 6 | networkName       | Associated network (system).                                | My Network               |

```
[
  {
    "createdAt": "2025-07-31T13:27:41Z",
    "updatedAt": "2025-07-31T13:27:41Z",
    "notBefore": "2025-07-31T13:27:41Z",
    "notAfter": "2025-07-31T13:27:41Z",
    "networkName": "My Network"
  },
]
```

Blink LightAccessory.schema.

|    | A                             | B   | C                        |
|----|-------------------------------|---|--------------------------|
| 1  | <b>Schema Field Name</b>      | <b>Schema Field Description</b>   | <b>Example</b>           |
| 2  | createdAt                     | Timestamp of record creation.   | 2021-09-29T11:04:43.305Z |
| 3  | updatedAt                     | Timestamp of last record update.  | 2021-09-29T11:04:43.305Z |
| 4  | name                          | Customer provided friendly name for lighting accessory.   | My Light Accessory       |
| 5  | deviceSerialNumberMasked      | Device serial number.   | *****02J6                |
| 6  | fwVersion                     | Current firmware version.   | 1.0.2.3                  |
| 7  | status                        | Current state/status of lighting accessory.   | online                   |
| 8  | offlineAlertCount             | Number of offline alerts sent.  | 0                        |
| 9  | batteryPowered                | Whether lighting accessory is battery powered or not.   | TRUE                     |
| 10 | batteryState                  | Battery state for lighting accessory.   | ok                       |
| 11 | batteryLevel                  | Latest reported lighting accessory battery voltage.   | 162                      |
| 12 | batteryCheckTime              | Timestamp for last battery state check.   | 2021-09-29T11:04:43.305Z |
| 13 | motionEnabled                 | Whether motion detection is enabled on lighting accessory.  | TRUE                     |
| 14 | daytimeMode                   | Whether the lighting accessory should be enabled during a motion event.                                   | TRUE                     |
| 15 | daytimeSensitivity            | The threshold to turn the lighting accessory on during a motion event (if daytime_mode is enabled).       | 5                        |
| 16 | illuminatorIntensity          | Brightness of lighting accessory.   | 50                       |
| 17 | illuminatorDuration           | Duration of time before auto shutoff turns lighting accessory off (in seconds).                           | 15                       |
| 18 | illuminatorHomescreenDuration | Number of seconds that the lights will stay on after a home screen tap.                                   | 300                      |
| 19 | illuminatorAutoEnabled        | Automatically turn the lights on when it's dark outside, independent of motion events or any other event. | TRUE                     |
| 20 | type                          | Lighting accessory type.  | Flood Light              |
| 21 | targetName                    | Target (device) this lighting accessory is associated with.   | Mini                     |
| 22 | deviceName                    | Target (device) this lighting accessory is associated with.   | My Wired Camera          |
| 23 | lightStatus                   | Current status of lights.   | off                      |
| 24 | lightStatusTimestamp          | Light status expires after this time.   | 2021-09-29T11:04:43.305Z |
| 25 | duskToDawnHoldoff             | Dusk to dawn status.  | TRUE                     |
| 26 | duskToDawnHoldoffTimestamp    | Dusk to dawn status expires after this time.  | 2021-09-29T11:04:43.305Z |
| 27 | networkName                   | Associated network (system).  | My Network               |

```
[
  {
    "createdAt": "2025-07-31T13:27:41Z",
    "updatedAt": "2025-07-31T13:27:41Z",
    "name": "My Light Accessory",
    "deviceSerialNumberMasked": "*****02J6",
    "fwVersion": "1.0.2.3",
    "status": "online",
    "offlineAlertCount": 0,
    "batteryPowered": true,
    "batteryState": "ok",
    "batteryLevel": 3.15,
    "batteryCheckTime": "2025-07-31T13:27:41Z",
    "motionEnabled": true,
    "daytimeMode": true,
    "daytimeSensitivity": 5,
    "illuminatorIntensity": 50,
    "illuminatorDuration": 15,
    "illuminatorHomescreenDuration": 300,
    "illuminatorAutoEnabled": true,
    "type": "Flood Light",
    "targetName": "owl",
    "deviceName": "My Wired Camera",
    "lightStatus": "off",
    "lightStatusTimestamp": "2025-07-31T13:27:41Z",
    "duskToDawnHoldoff": true,
    "duskToDawnHoldoffTimestamp": "2025-07-31T13:27:41Z",
    "networkName": "My Network"
  },
]
```

Blink BatteryExtensionPackAccessory.schema

|   | A                        | B   | C  |
|---|--------------------------|---|--|
| 1 | <b>Schema Field Name</b> | <b>Schema Field Description</b>   | <b>Example</b>                             |
| 2 | createdAt                | Timestamp of record creation.   | 2021-09-29T11:04:43.305Z                   |
| 3 | updatedAt                | Timestamp of last record update.  | 2021-09-29T11:04:43.305Z                   |
| 4 | deviceSerialNumberMasked | Device serial number.   | *****02J6                                  |
| 5 | type                     | Battery extension pack accessory type.                                    | Battery Extension Pack for Blink Outdoor 4 |
| 6 | targetName               | Target (device) this battery extension pack accessory is associated with. | XT2  |
| 7 | deviceName               | Target (device) this battery extension pack accessory is associated with. | My Camera                                  |
| 8 | networkName              | Associated network (system).  | My Network                                 |

```
[
  {
    "createdAt": "2025-07-31T13:27:41Z",
    "updatedAt": "2025-07-31T13:27:41Z",
    "deviceSerialNumberMasked": "*****02J6",
    "type": "Battery Extension Pack for Blink Outdoor 4",
    "targetName": "XT2",
    "deviceName": "My Wired Camera",
    "networkName": "My Network"
  },
]
```

Blink CameraStatus.schema.

|    | A                           | B   | C                        |
|----|-----------------------------|---|--------------------------|
| 1  | <b>Schema Field Name</b>    | <b>Schema Field Description</b>                     | <b>Example</b>           |
| 2  | eventDate                   | Timestamp of record creation.                       | 2021-09-29T11:04:43.305Z |
| 3  | type                        | Status type, mini or full.                          | mini                     |
| 4  | acPower                     | Indicates that the camera is connected to AC power. | TRUE                     |
| 5  | batteryAlertStatus          | Indicates that there is a battery alert.            | TRUE                     |
| 6  | batteryVoltage              | Current voltage level of the camera battery.        | 171                      |
| 7  | dhcpFailureCount            | Number of DHCP failures.                            | 0                        |
| 8  | fwVersion                   | Current firmware version.                           | 1.71                     |
| 9  | ipAddress                   | IP address of the camera.                           | 192.168.0.100            |
| 10 | lfrStrength                 | Strength of the LFR signal.                         | -11                      |
| 11 | macAddress                  | MAC address of the camera.                          | 00:00:00:00:00:00        |
| 12 | networkName                 | Associated network (system).                        | My Network               |
| 13 | status                      | Current status of the camera.                       | lfr_ok                   |
| 14 | deviceSerialNumberMasked    | Device serial number.                               | *****01GV                |
| 15 | temperatureFahrenheit       | Current temperature reading of the camera.          | 80                       |
| 16 | tempAlertStatus             | Indicates that there is a temperature alert.        | TRUE                     |
| 17 | timeDhcpLeaseMicroseconds   | Time taken for DHCP lease.                          | 7904022                  |
| 18 | timeDnsResolveMicroseconds  | Time taken for DNS resolution.                      | 0                        |
| 19 | timeFirstVideoMicroseconds  | Time to first frame of video capture.               | 0                        |
| 20 | timeOnAcMicroseconds        | Time the camera has been on AC power.               | 0                        |
| 21 | timeOnBatteryMicroseconds   | Time the camera has been on battery power.          | 0                        |
| 22 | timeWlanConnectMicroseconds | Time taken to connect to WiFi.                      | 4731947                  |
| 23 | wifiConnectFailureCount     | Number of WiFi connection failures.                 | 0                        |
| 24 | wifiStrength                | Strength of the WiFi signal.                        | -11                      |
| 25 | networkType                 | Type of network connection.                         | wifi                     |
| 26 | vo9Strength                 | Strength of the Vo9 signal.                         | -11                      |

```
[
  {
    "eventDate": "2025-07-31T13:27:30Z",
    "acPower": true,
    "batteryAlertStatus": true,
    "batteryVoltage": 3.17,
    "dhcpFailureCount": 0,
    "fwVersion": "1.71",
    "ipAddress": "192.168.0.100",
    "lfrStrength": -11,
    "macAddress": "00:00:00:00:00:00",
    "networkName": "My Network",
    "status": "lfr_ok",
    "deviceSerialNumberMasked": "*****02J7",
    "temperatureFahrenheit": 80,
    "tempAlertStatus": true,
    "timeDhcpLeaseMicroseconds": 0,
    "timeDnsResolveMicroseconds": 0,
    "timeFirstVideoMicroseconds": 0,
    "timeOnAcMicroseconds": 0,
    "timeOnBatteryMicroseconds": 0,
    "timeWlanConnectMicroseconds": 0,
    "type": "full",
    "wifiConnectFailureCount": 0,
    "wifiStrength": -11,
    "networkType": "wifi",
    "vo9Strength": -11
  },
]
```

Blink DoorbellStatus.schema.json

---

|    | A                           | B  | C                        |
|----|-----------------------------|--|--------------------------|
| 1  | <b>Schema Field Name</b>    | <b>Schema Field Description</b>                              | <b>Example</b>           |
| 2  | eventDate                   | Timestamp of record creation.                                | 2021-09-29T11:04:43.305Z |
| 3  | type                        | Type of status record (full or mini).                        | full                     |
| 4  | deviceSerialNumberMasked    | Device serial number.  | *****01GV                |
| 5  | networkName                 | Associated network (system).                                 | My Network               |
| 6  | wifiStrength                | Strength of the WiFi signal.                                 | -11                      |
| 7  | lfrStrength                 | Strength of the LFR signal.                                  | -11                      |
| 8  | temperatureFahrenheit       | Current temperature reading of the doorbell.                 | 80                       |
| 9  | batteryVoltage              | Current voltage level of the doorbell battery.               | 166                      |
| 10 | fwVersion                   | Current firmware version.                                    | 1.21                     |
| 11 | macAddress                  | MAC address of the doorbell.                                 | 00:00:00:00:00:00        |
| 12 | ipAddress                   | IP address of the doorbell.                                  | 192.168.0.100            |
| 13 | acPower                     | Indicates that the doorbell is connected to AC power.        | TRUE                     |
| 14 | timeFirstVideoMicroseconds  | Time to first frame of video capture.                        | 0                        |
| 15 | timeWlanConnectMicroseconds | Time taken to connect to WiFi.                               | 0                        |
| 16 | timeDhcpLeaseMicroseconds   | Time taken for DHCP lease.                                   | 0                        |
| 17 | timeDnsResolveMicroseconds  | Time taken for DNS resolution.                               | 0                        |
| 18 | wifiConnectFailureCount     | Number of WiFi connection failures.                          | 0                        |
| 19 | dhcpFailureCount            | Number of DHCP failures.                                     | 0                        |
| 20 | socketFailureCount          | Number of socket failures.                                   | 0                        |
| 21 | doorbellMode                | Current mode of the doorbell.                                | lfr                      |
| 22 | unloadedTapVoltage          | Unloaded tap voltage (units are 20mV per count).             | 0                        |
| 23 | bridgeVoltage               | Bridge voltage.  | 0                        |
| 24 | acMaxCurrentMilliamp        | Maximum current measured.                                    | 0                        |
| 25 | timeOnBattery               | Time spent on battery power (in tenths of a second).         | 0                        |
| 26 | timeOnAc                    | Time spent on AC power (in tenths of a second).              | 0                        |
| 27 | powerHarvestingEnabled      | Whether device is enabled for harvesting power.              | 0                        |
| 28 | harvestCurrentMilliamp      | Maximum harvestable current allowed during power harvesting. | 0                        |
| 29 | pirTotalEventsCount         | Total number of motion events detected.                      | 0                        |

```
[
  {
    "type": "full",
    "eventDate": "2025-07-31T13:27:30Z",
    "deviceSerialNumberMasked": "*****02J7",
    "networkName": "My Network",
    "wifiStrength": -11,
    "lfrStrength": -11,
    "temperatureFahrenheit": 80,
    "batteryVoltage": 3.15,
    "fwVersion": "1.21",
    "macAddress": "00:00:00:00:00:00",
    "ipAddress": "192.168.0.100",
    "acPower": true,
    "timeFirstVideoMicroseconds": 0,
    "timeWlanConnectMicroseconds": 0,
    "timeDhcpLeaseMicroseconds": 0,
    "timeDnsResolveMicroseconds": 0,
    "wifiConnectFailureCount": 0,
    "dhcpFailureCount": 0,
    "socketFailureCount": 0,
    "doorbellMode": "lfr",
    "unloadedTapVoltage": 0,
    "bridgeVoltage": 0,
    "acMaxCurrentMilliamp": 0,
    "timeOnBattery": 0,
    "timeOnAc": 0,
    "harvestCurrentMilliamp": 0,
    "powerHarvestingEnabled": false,
    "pirTotalEventsCount": 0
  },
]
```

Blink WiredCameraStatus.schema

|    | A                           | B                                       | C                        |
|----|-----------------------------|---|--------------------------|
| 1  | Schema Field Name           | Schema Field Description                | Example                  |
| 2  | eventDate                   | Timestamp of record creation.           | 2021-09-29T11:04:43.305Z |
| 3  | deviceSerialNumberMasked    | Device serial number.                   | *****01GV                |
| 4  | networkName                 | Associated network (system).            | My Network               |
| 5  | wifiStrength                | Strength of the WiFi signal.            | -11                      |
| 6  | fwVersion                   | Current firmware version.               | 1.21                     |
| 7  | macAddress                  | MAC address of the wired device device. | 00:00:00:00:00:00        |
| 8  | ipAddress                   | IP address of the wired device.         | 192.168.0.100            |
| 9  | timeFirstVideoMicroseconds  | Time to first frame of video capture.   | 0                        |
| 10 | timeWlanConnectMicroseconds | Time taken to connect to WiFi.          | 0                        |
| 11 | timeDhcpLeaseMicroseconds   | Time taken for DHCP lease.              | 0                        |
| 12 | timeDnsResolveMicroseconds  | Time taken for DNS resolution.          | 0                        |
| 13 | type                        | Type of the wired device.               | full                     |
| 14 | wifiConnectFailureCount     | Number of WiFi connection failures.     | 0                        |
| 15 | dhcpFailureCount            | Number of DHCP failures.                | 0                        |
| 16 | socketFailureCount          | Number of socket failures.              | 0                        |
| 17 | floodlightsIntensity        | Floodlights light intensity.            | 0                        |
| 18 | alsReading                  | Ambient light sensor reading.           | 0                        |

```
[
  {
    "eventDate": "2025-07-31T13:27:30Z",
    "deviceSerialNumberMasked": "*****02J7",
    "networkName": "My Network",
    "wifiStrength": -11,
    "fwVersion": "1.21",
    "macAddress": "00:00:00:00:00:00",
    "ipAddress": "192.168.0.100",
    "timeFirstVideoMicroseconds": 0,
    "timeWlanConnectMicroseconds": 0,
    "timeDhcpLeaseMicroseconds": 0,
    "timeDnsResolveMicroseconds": 0,
    "type": "full",
    "wifiConnectFailureCount": 0,
    "dhcpFailureCount": 0,
    "socketFailureCount": 0,
    "floodlightsIntensity": 0,
    "alsReading": 0
  },
]
```

Blink SyncModuleStatus.schema

|   | A                        | B                                | C                        |
|---|--------------------------|----------------------------------|--------------------------|
| 1 | Schema Field Name        | Schema Field Description         | Example                  |
| 2 | eventDate                | Timestamp of record creation.    | 2021-09-29T11:04:43.305Z |
| 3 | deviceSerialNumberMasked | Device serial number.            | *****01GV                |
| 4 | fwVersion                | Current firmware version.        | 1.21                     |
| 5 | ipAddress                | IP address of the sync module.   | 192.168.0.100            |
| 6 | wifiStrength             | Strength of the WiFi signal.     | -11                      |
| 7 | osVersion                | Version of the operating system. | 1.21                     |
| 8 | ethernetConnected        | Connected to wired ethernet.     | TRUE                     |
| 9 | networkName              | Associated network (system).     | My Network               |

```
[
  {
    "eventDate": "2025-05-19T19:45:44Z",
    "deviceSerialNumberMasked": "*****02J7",
    "fwVersion": "1.21",
    "ipAddress": "192.168.0.100",
    "wifiStrength": -11,
    "osVersion": "1.21",
    "ethernetConnected": true,
    "networkName": "My Network"
  },
]
```

Blink AccessoryStatus.schema.



|    | A                              | B   | C                        |
|----|--------------------------------|---|--------------------------|
| 1  | Schema Field Name              | Schema Field Description                                | Example                  |
| 2  | eventDate                      | Timestamp of record creation.                           | 2021-09-29T11:04:43.305Z |
| 3  | accessoryType                  | Type of the accessory.                                  | Flood Light              |
| 4  | fwVersion                      | Current firmware version.                               | 1.21                     |
| 5  | batteryPowered                 | Indicates that the accessory is battery-powered.        | TRUE                     |
| 6  | batteryLevel                   | Current battery level of the accessory (if applicable). | 0                        |
| 7  | accessoryReady                 | Indicates that the accessory is ready and operational.  | TRUE                     |
| 8  | networkName                    | Associated network (system).                            | My Network               |
| 9  | parentDeviceSerialNumberMasked | Parent device serial number.                            | *****01GV                |
| 10 | deviceSerialNumberMasked       | Device serial number.                                   | *****01GV                |

```
[
  {
    "eventDate": "2025-07-31T13:27:30Z",
    "accessoryType": "Flood Light",
    "fwVersion": "1.21",
    "batteryPowered": true,
    "batteryLevel": 0,
    "accessoryReady": true,
    "networkName": "My Network",
    "parentDeviceSerialNumberMasked": "*****02J7",
    "deviceSerialNumberMasked": "*****02J6"
  },
]
```

Blink LightStatus.schema.json

|   | A                        | B   | C                        |
|---|--------------------------|---|--------------------------|
| 1 | Schema Field Name        | Schema Field Description                                  | Example                  |
| 2 | eventDate                | Timestamp of record creation.                             | 2021-09-29T11:04:43.305Z |
| 3 | brightness               | Current brightness level of the light.                    | 5                        |
| 4 | eventTimestamp           | Timestamp of the event that triggered this status update. | 0                        |
| 5 | eventType                | Type of event.  | lights_on                |
| 6 | networkName              | Associated network (system).                              | My Network               |
| 7 | deviceSerialNumberMasked | Device serial number.                                     | *****01GV                |

```
[
  {
    "brightness": 5,
    "eventDate": "2025-07-31T13:27:30Z",
    "eventTimestamp": "2025-07-31T13:27:30Z",
    "eventType": "lights_on",
    "networkName": "My Network",
    "deviceSerialNumberMasked": "*****02J7"
  },
]
```

Blink CommandHistory.schema

|    | A                        | B  | C  |
|----|--------------------------|--|--|
| 1  | <b>Schema Field Name</b> | <b>Schema Field Description</b>                  | <b>Example</b>   |
| 2  | eventDate                | Timestamp of record creation.                    | 2021-09-29T11:04:43.305Z                                       |
| 3  | updatedAt                | Timestamp when this command was last updated.    | 2021-09-29T11:04:43.305Z                                       |
| 4  | command                  | Type of command issued.                          | config_lfr   |
| 5  | stateStage               | Stage that command completed in.                 | dev  |
| 6  | stateCondition           | The condition that the command completed in.     | done   |
| 7  | totalDurationSeconds     | Duration command took to complete.               | 4  |
| 8  | byWhom                   | Identifier of client that initiated the command. | Ctdis iPad (2) - 6.14.0 (2206201618) #e648b4a6e-mod - liveview |
| 9  | targetName               | Target (device) this command is associated with. | doorbell   |
| 10 | deviceName               | Name of the device the command executed on.      | My Doorbell  |
| 11 | cameraName               | Name of the camera the device executed on.       | My Camera  |
| 12 | networkName              | Associated network (system).                     | My Network   |

```
[
  {
    "eventDate": "2025-05-19T19:45:44Z",
    "updatedAt": "2025-05-19T19:45:44Z",
    "command": "config_lfr",
    "stateStage": "dev",
    "stateCondition": "done",
    "totalDurationSeconds": 4,
    "byWhom": "Ctdis iPad (2) - 6.14.0 (2206201618) #e648b4a6e-mod - liveview",
    "targetName": "Mini",
    "deviceName": "My Device",
    "cameraName": "My Camera",
    "networkName": "My Network"
  },
]
```

Blink Vo9Stats.schema.json

|    | A                        | B  | C                        |
|----|--------------------------|--|--------------------------|
| 1  | <b>Schema Field Name</b> | <b>Schema Field Description</b>                  | <b>Example</b>           |
| 2  | eventDate                | Timestamp of record creation.                    | 2021-09-29T11:04:43.305Z |
| 3  | deviceSerialNumberMasked | Device serial number.                            | *****01GV                |
| 4  | sentDataFrames           | Number of sent data frames.                      | 0                        |
| 5  | sentDataFramesErrors     | Number of sent data frame errors.                | 0                        |
| 6  | sentDataFramesRetransmit | Number of sent frame re-transmissions.           | 0                        |
| 7  | receivedDataFrames       | Number of received data frames.                  | 0                        |
| 8  | receivedDataFramesErrors | Number of received data frame errors.            | 0                        |
| 9  | receivedCrcCheckFailed   | Number of received frames that failed CRC check. | 0                        |
| 10 | configuration            | Device configuration.                            | 0                        |
| 11 | networkName              | Associated network (system).                     | My Network               |

```
[
  {
    "deviceSerialNumberMasked": "*****02J7",
    "networkName": "My Network",
    "sentDataFrames": 0,
    "sentDataFramesErrors": 0,
    "sentDataFramesRetransmit": 0,
    "receivedDataFrames": 0,
    "receivedDataFramesErrors": 0,
    "receivedCrcCheckFailed": 0,
    "configuration": 0,
    "eventDate": "2025-07-31T13:27:30Z"
  },
]
```

Blink NotificationRecipient.schema.json

|   | A                         | B   | C                        |
|---|---------------------------|---|--------------------------|
| 1 | <b>Schema Field Name</b>  | <b>Schema Field Description</b>                               | <b>Example</b>           |
| 2 | eventDate                 | Timestamp of record creation.                                 | 2021-09-29T11:04:43.305Z |
| 3 | eventType                 | Type of the notification recipient.                           | apns                     |
| 4 | clientName                | Name of the notification recipient.                           | iPhone                   |
| 5 | clientAcknowledgedReceipt | Current status of the notification - client notified receipt. | TRUE                     |
| 6 | clientType                | Client type of the notification recipient.                    | cm                       |
| 7 | cameraName                | Name of camera that triggered the notification.               | My Camera                |

```
[
  {
    "eventDate": "2025-07-31T13:27:30Z",
    "clientType": "apns",
    "clientName": "iPhone",
    "clientAcknowledgedReceipt": true,
    "cameraName": "My Camera",
    "eventType": "cm"
  },
]
```

Blink BandwidthResults.schema.json

|    | A                        | B   | C                        |
|----|--------------------------|---|--------------------------|
| 1  | <b>Schema Field Name</b> | <b>Schema Field Description</b>                   | <b>Example</b>           |
| 2  | eventDate                | Timestamp of record creation.                     | 2021-09-29T11:04:43.305Z |
| 3  | totalBytes               | Total bytes transferred during instruction block. | 0                        |
| 4  | uploadTime               | Upload time for instruction block.                | 0                        |
| 5  | bandwidthKbps            | Bandwidth for instruction block.                  | 0                        |
| 6  | serverTotalBytes         | Total bytes transferred for server connection.    | 0                        |
| 7  | serverUploadTime         | Upload time for server connection.                | 0                        |
| 8  | serverBandwidthKbps      | Bandwidth for server connection.                  | 0                        |
| 9  | vo9TotalBytes            | Total bytes transferred for Vo9 connection.       | 0                        |
| 10 | vo9UploadTime            | Upload time for Vo9 connection.                   | 0                        |
| 11 | vo9BandwidthKbps         | Bandwidth for Vo9 connection.                     | 0                        |
| 12 | deviceSerialNumberMasked | Device serial number.                             | *****01GV                |

```
[
  {
    "eventDate": "2025-07-31T13:27:30Z",
    "deviceSerialNumberMasked": "*****02J7",
    "totalBytes": 0,
    "uploadTime": 0,
    "bandwidthKbps": 0,
    "serverTotalBytes": 0,
    "serverUploadTime": 0,
    "serverBandwidthKbps": 0,
    "vo9TotalBytes": 0,
    "vo9UploadTime": 0,
    "vo9BandwidthKbps": 0
  },
]
```

Blink Event.schema.json

|   | A                        | B  | C                        |
|---|--------------------------|--|--------------------------|
| 1 | <b>Schema Field Name</b> | <b>Schema Field Description</b>                              | <b>Example</b>           |
| 2 | eventDate                | Timestamp of record creation.                                | 2021-09-29T11:04:43.305Z |
| 3 | type                     | Type of event.   | scheduled_arm            |
| 4 | notified                 | Flag indicating that a notification was sent for this event. | TRUE                     |
| 5 | deviceType               | Type of device associated with event.                        | Floodlight               |
| 6 | deviceName               | Name of device associated with event.                        | My Camera                |
| 7 | networkName              | Associated network (system).                                 | My Network               |

```
[
  {
    "cameraName": "My Camera",
    "networkName": "My Network",
    "eventDate": "2025-07-31T13:27:30Z",
    "type": "scheduled_arm",
    "notified": true
  },
]
```

## Upcoming Scope

If the data you are looking for isn't covered in the Available scope, use Contact Us to submit your feedback by choosing the Category Amazon Data Portability and the Topic Feedback & Feature Requests.